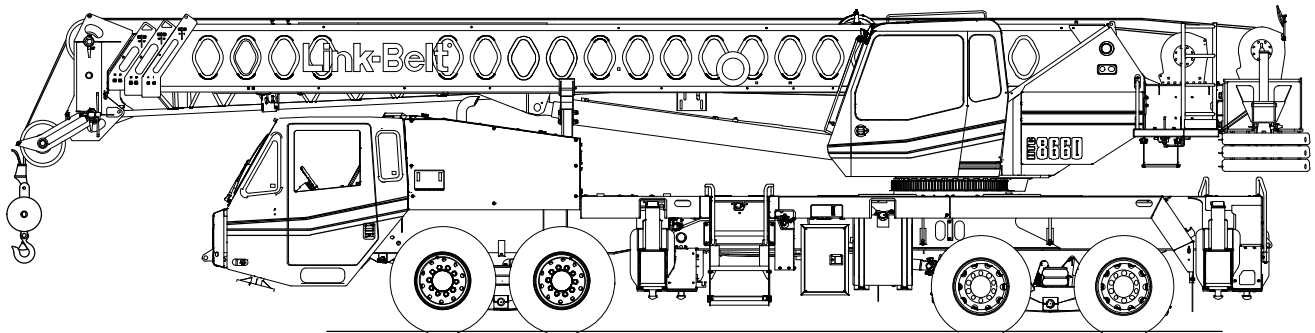


Technical Data

Specifications & Capacities

HTC 8660

Series II
Telescopic Boom Truck Crane
60 US ton
50 metric ton



CAUTION: This material is supplied for reference use only. Operator must refer to in-cab Crane Rating Manual and Operator's Manual to determine allowable crane lifting capacities and assembly and operating procedures.

Table Of Contents

| | |
|---|-----------|
| Boom, Attachments, and Upper Structure | 1 |
| Boom | 1 |
| Boom Head | 1 |
| Boom Elevation | 1 |
| Auxiliary Lifting Sheave – Optional | 1 |
| Hook Blocks and Balls – Optional | 1 |
| Fly – Optional | 1 |
| Upper Operator’s Cab and Controls | 1 |
| Swing | 2 |
| Electrical | 2 |
| Load Hoist System | 3 |
| Load Hoist Performance | 3 |
| 2M Main and Optional Auxiliary Winches | 3 |
| Hydraulic System | 3 |
| Counterweight | 3 |
| Carrier | 4 |
| General | 4 |
| Outriggers | 4 |
| Steering and Axles | 4 |
| Suspension | 4 |
| Tires and Wheels | 4 |
| Brakes | 4 |
| Electrical | 4 |
| Engine | 4 |
| Transmission | 5 |
| Carrier Speeds and Gradeability | 5 |
| Fuel Tank | 5 |
| Hydraulic System | 5 |
| Pump Drive | 5 |
| Lower Cab and Controls | 6 |
| Additional Equipment | 6 |
| Axle Loads | 7 |
| Axle Loads with 2–Axle Boom Dolly | 8 |
| General Dimensions | 9 |
| EPA 2013 | 9 |
| Tier 3 / Stage IIIA | 10 |
| Working Range Diagram | 11 |

| | |
|---|-----------|
| Boom Extend Modes | 12 |
| Main Boom Lift Capacity Charts — Standard | 13 |
| 11,500 lb Counterweight — Fully Extended Outriggers — 360° Rotation | 13 |
| 11,500 lb Counterweight — On Tires — Stationary — Boom Centered Over Rear | 14 |
| 11,500 lb Counterweight — On Tires — Pick & Carry (1 mph) — Boom Centered Over Rear | 14 |
| Main Boom Lift Capacity Charts — Optional | 15 |
| 15,100 lb Counterweight — Fully Extended Outriggers — 360° Rotation | 15 |
| 15,100 lb Counterweight — On Tires — Stationary — Boom Centered Over Rear | 16 |
| 15,100 lb Counterweight — On Tires — Pick & Carry (1 mph) — Boom Centered Over Rear | 16 |
| Fly Attachment Lift Capacity Charts — Optional | 17 |
| 11,500 lb Counterweight — Fully Extended Outriggers — 360° Rotation | 17 |
| 110 ft Main Boom Length 2° Fly Offset | 17 |
| 110 ft Main Boom Length 20° Fly Offset | 17 |
| 110 ft Main Boom Length 40° Fly Offset | 17 |
| 15,100 lb Counterweight — Fully Extended Outriggers — 360° Rotation | 18 |
| 110 ft Main Boom Length 2° Fly Offset | 18 |
| 110 ft Main Boom Length 20° Fly Offset | 18 |
| 110 ft Main Boom Length 40° Fly Offset | 18 |
| Main Boom Lift Capacity Charts — Optional (Metric) | 19 |
| 5.2t Counterweight — Fully Extended Outriggers — 360° Rotation | 19 |
| 5.2t Counterweight — On Tires — Stationary — Boom Centered Over Rear | 20 |
| 5.2t Counterweight — On Tires — Pick & Carry (1.6km/h) — Boom Centered Over Rear | 20 |
| 6.8t Counterweight — Fully Extended Outriggers — 360° Rotation | 21 |
| 6.8t Counterweight — On Tires — Stationary — Boom Centered Over Rear | 22 |
| 6.8t Counterweight — On Tires — Pick & Carry (1.6km/h) — Boom Centered Over Rear | 22 |
| Fly Attachment Lift Capacity Charts — Optional (Metric) | 23 |
| 5.2t Counterweight — Fully Extended Outriggers — 360° Rotation | 23 |
| 33.53m Main Boom Length 2° Fly Offset | 23 |
| 33.53m Main Boom Length 20° Fly Offset | 23 |
| 33.53m Main Boom Length 40° Fly Offset | 23 |
| 6.8t Counterweight — Fully Extended Outriggers — 360° Rotation | 24 |
| 33.53m Main Boom Length 2° Fly Offset | 24 |
| 33.53m Main Boom Length 20° Fly Offset | 24 |
| 33.53m Main Boom Length 40° Fly Offset | 24 |

Boom, Attachments, and Upper Structure

■ Boom

Design — Four section, box type construction of high tensile steel consisting of one base section and three telescoping sections. The vertical side plates have diamond shaped impression for superior strength to weight ratio. The first telescoping section extends independently by means of one double-acting, single stage hydraulic cylinder with integrated holding valves. The second and third telescoping sections extend proportionally by means of one double-acting, single stage cylinder with integrated holding valves and cables.

Boom

- 35.5–110 ft (10.8–33.5m) four-section full power boom
- Two mode boom extension: A—max mode provides superior capacities by extending the first telescope section to 60.3 ft (18.4m). Standard mode synchronizes all the telescoping sections proportionally to 110 ft (33.5m). Controlled from operator's cab.
- Mechanical boom angle indicator
- Maximum tip height for A—max mode is 68.8 ft (21.0m) and standard mode is 117.4 ft (35.8m).

Boom Head

- Four 16.5 in (41.9cm) root diameter nylon sheaves to handle up to eight parts of line
- Easily removable wire rope guards
- Rope dead end lugs on each side of the boom head
- Boom head is designed for quick-reeve of the hook block

Boom Elevation

- One double acting hydraulic cylinder with integral holding valve
- Boom elevation: -3° to 78°

Auxiliary Lifting Sheave — Optional

- Single 16.5 in (41.9m) root diameter nylon sheave
- Easily removable wire rope guards
- Does not affect erection of the fly or use of the main head sheaves

Hook Blocks and Balls — Optional

- 25 ton (22.7mt) 3 sheave quick-reeve hook block with safety latch
- 40 ton (36.3mt) 4 sheave quick-reeve hook block with safety latch
- 50 ton (45.4mt) 5 sheave quick-reeve hook block with safety latch
- 8.5 ton (7.7mt) swivel and non-swivel hook balls with safety latch
- 60 ton (54.4mt) 5 sheave quick-reeve hook block with safety latch
- 45 ton (40.8mt) 3 sheave quick-reeve hook block with safety latch

Fly — Optional

- 28.5 ft (8.7m) one piece lattice fly, stowable, offsettable to 2° , 20° , and 40° . Maximum tip height is 144.8 ft (44.1m).
- 28.5–51 ft (8.7–15.5m) two piece bi-fold lattice fly, stowable, offsettable to 2° , 20° and 40° . Maximum tip height is 166.9 ft (50.9m).

■ Upper Operator's Cab and Controls

Environmental Cab — Fully enclosed, one person cab of galvalneal steel structure with acoustical insulation. Equipped with:

- Tinted and tempered glass windows
- Extra-large fixed front window with windshield wiper and washer
- Swing up roof window with windshield wiper and washer
- Sliding left side door with large fixed window
- Sliding rear and right side windows for ventilation
- Six way adjustable, cushioned seat with seat belt and storage compartment
- Diesel fired warm-water heater with air ducts for front windshield defroster and cab floor
- Defroster fan for the front window
- Bubble level
- Circulating fan
- Adjustable sun visor
- LED Dome light
- Cup holder
- Fire extinguisher
- Left side viewing mirror
- Pull-out cabwalk
- Two position travel swing lock
- AM/FM Radio

Air Conditioning — Optional — Integral with cab heating system utilizing the same ventilation outlets

Armrest Controls — Two dual axis hydraulic joystick controllers or optional single axis hydraulic controllers for:

- Swing
- Boom hoist
- Main rear winch
- Auxiliary front winch — optional
- Drum rotation indication
- Drum rotation indicator activation switch
- Swing park brake switch
- Winch high/low speed and disable switch(es)
- Telescope override switch
- Warning horn button
- Pump enable
- Heating controls
- Air conditioning — optional
- Engine throttle block

Outrigger Controls — Hand held control box with umbilical cord gives the operator the freedom to view operation while setting the outriggers.

Foot Controls

- Boom telescope
- Swing brake
- Engine throttle

Right Front Console – Controls and indicators for:

- Engine ignition
- Function disable
- Front windshield wiper and washer
- Cab floodlights
- Warning horn
- Console dimmer switch
- Bubble level
- 12 volt power connection
- Boom floodlight – optional
- Rotating beacon or strobe light switch – optional
- Third wrap selector switch – optional

Camera Display – Located on dash console

- Displays right side of upper
- Displays main and auxiliary winches

Cab Instrumentation – Ergonomically positioned LCD display, CANBUS instrumentation for crane operation including:

- Tachometer
- Engine water temperature
- Fuel level
- Hydraulic oil temperature
- Stop engine
- Check engine
- Diesel exhaust fluid
- Regeneration disabled light (EPA 2013 engine only)
- DPF regeneration light (EPA 2013 engine only)
- High exhaust temperature light (EPA 2013 engine only)
- Malfunction indicator lamp (EPA 2013 engine only)
- Engine oil pressure
- Swing park brake light
- Battery voltage
- Fuel rate (gal/hr)
- Engine load
- Engine Diagnostics
- Third wrap indicator

Link-Belt Pulse – The Link-Belt in-house designed, total crane operating system that utilizes the display as a readout and operator interface for the following systems:

- **Rated capacity limiter** – LCD graphic audio – visual warning system integrated into the dash with anti – two block and function limiter. Operating data includes:
 - Crane configuration
 - Boom length and angle
 - Boom head height
 - Allowed load and % of allowed load
 - RCL light bar
 - Boom angle
 - Radius of load
 - Actual load
 - Wind speed
 - Highlighted unit of measurement on working screen
 - Telescope operation displayed in real time
 - Diagnostics
 - Operator settable alarms (include):
 - Maximum and minimum boom angles
 - Maximum tip height
 - Maximum boom length
 - Swing left/right positions
 - Operator defined area (imaginary plane)
- **Telematics** – Cellular–based data logging and monitoring system that provides:
 - Location and operational settings
 - Routine maintenance
 - Crane and engine monitoring
 - Diagnostic and fault codes

Integrated Third Wrap Indicator – Optional – Link–Belt Pulse color display visually and audibly warns the operator when the wire rope is on the first/bottom layer and when the wire rope is down to the last three wraps.

Integrated Third Wrap Function Kickout – Optional – Link–Belt Pulse color display visually and audibly warns the operator when the wire rope is on the first/bottom layer and provides a function kickout when the wire rope is down to the last three wraps.

Internal RCL Light Bar – Visually informs the operator when crane is approaching maximum load capacity with a series of green, yellow, and red lights.

External RCL Light Bar – Optional – Visually informs the ground crew when crane is approaching maximum load capacity with a series of green, yellow, and red lights.

■ Swing

Motor/Planetary – Bi–directional hydraulic swing motor mounted to a planetary reducer for 360° continuous smooth swing at 2.5 rpm.

Swing Park Brake – 360°, electric over hydraulic, (spring applied/hydraulic released) multi–disc brake mounted on the speed reducer. Operated by a switch from the operator’s cab.

Swing Brake – 360°, foot operated, hydraulic applied disc brake mounted to the speed reducer.

Swing Lock – Two–position swing lock (boom over front or rear) operated from the operator’s cab.

360° Positive Swing Lock – Optional – Meets New York City requirement.

■ Electrical

Swing Alarm – Audio warning device signals when the upper is swinging.

Lights

- Two LED working lights on front of the cab
- One LED working light on the top of the cab – optional
- One amber strobe beacon on top of the cab – optional
- Boom floodlight – Single – optional
- Boom floodlight – Dual – optional
- Boom floodlight – High intensity remote controlled – optional

Load Hoist System

Load Hoist Performance

| Main (Rear) and Auxiliary (Front) Winches — 5/8 in (16mm) Rope | | | | | | | | | | |
|--|-------------------|-------|-------------------|-------|-----------------|-------|-------|------|-------|-------|
| Layer | Maximum Line Pull | | Normal Line Speed | | High Line Speed | | Layer | | Total | |
| | lb | kN | ft/min | m/min | ft/min | m/min | ft | m | ft | m |
| 1 | 15,871 | 70.59 | 166 | 50.5 | 329 | 100.2 | 97 | 29.6 | 97 | 29.6 |
| 2 | 14,356 | 63.86 | 183 | 55.8 | 364 | 110.8 | 108 | 32.6 | 205 | 62.5 |
| 3 | 13,104 | 58.29 | 201 | 61.2 | 398 | 121.4 | 117 | 36.0 | 322 | 98.1 |
| 4 | 12,054 | 53.62 | 218 | 66.5 | 433 | 132.0 | 128 | 39.0 | 450 | 137.2 |
| 5 | 11,159 | 49.64 | 236 | 71.8 | 468 | 142.6 | 139 | 42.1 | 589 | 179.5 |
| 6 | 10,388 | 46.21 | 253 | 77.2 | 502 | 153.2 | 148 | 45.1 | 737 | 224.6 |

| Wire Rope Application | | Diameter | | Type | Maximum Permissible Load | |
|-------------------------|----------|----------|----|--|--------------------------|---------|
| | | in | mm | | lb | kg |
| Main (Rear) Winch | Standard | 5/8 | 16 | 18x19 rotation resistant — right regular lay (Type RB) | 9,080 | 4 118.6 |
| | Optional | 5/8 | 16 | 34x7 rotation resistant — right regular lay (Type ZB) | 11,080 | 5 030 |
| Auxiliary (Front) Winch | Standard | 5/8 | 16 | 18x19 rotation resistant — right regular lay (Type RB) | 9,080 | 4 118.6 |
| | Optional | 5/8 | 16 | 34x7 rotation resistant — right regular lay (Type ZB) | 11,080 | 5 030 |

2M Main and Optional Auxiliary Winches

- Axial piston, full and half displacement (2—speed) motors driven through planetary reduction unit for positive control under all load conditions.
- Grooved lagging
- Power up/down mode of operation
- Hoist drum cable follower — optional
- Drum rotation indicator
- Drum diameter: 10.63 in (27.0cm)
- Rope length:
 - Main: 550 ft (167.6m)
 - Auxiliary: 450 ft (137.2m) or 550 ft (167.6m)
- Terminator style socket and wedge

Hydraulic System

Counterbalance Valves — All hoist motors, boom extend cylinders, and boom hoist cylinder are equipped with counterbalance valves to provide load lowering and to prevent accidental load drop if hydraulic power is suddenly reduced.

Hydraulic Oil Cooler — Carrier mounted cooler removes heat from the hydraulic oil. Cooler is integral to the engine radiator/charge air cooler.

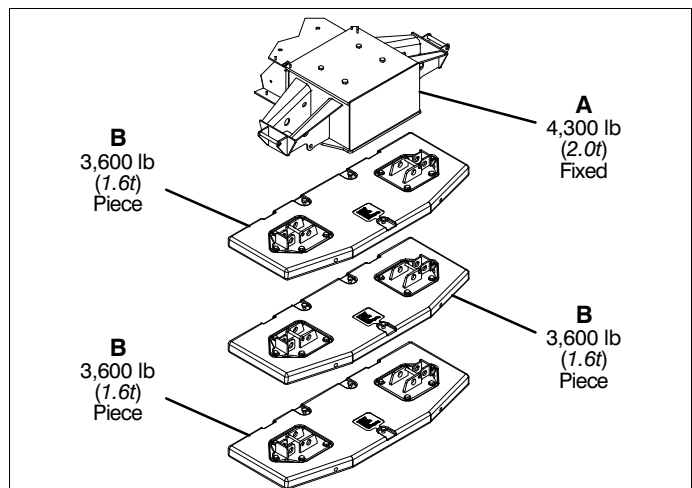
Boom Hoist Float Valves (Optional) — For transporting the boom over the rear of the crane with a boom dolly. Allows hydraulic oil within the boom hoist cylinder to flow between piston side and rod side, allowing the boom to float while on the boom dolly.

Swing Brake Release — For transporting the boom over the rear of the crane with a boom dolly. Holds the 360° swing park brake in the released position allowing free rotation of the upper structure.

Counterweight

Standard — 11,500 lb (5.2t) total counterweight consisting of two, hydraulically removable 3,600 lb (1.6t) counterweights with capacities for 4,300 lb (2.0t) and 7,900 lb (3.6t) counterweight configurations. Assembled and disassembled by hydraulic cylinders controlled from both sides of the upper structure.

Optional — 3,600 lb (1.6t) in addition to standard counterweight for a total of 15,100 lb (6.8t).



| Counterweight Packages | | 11,500 lb (5.2t) — Standard | | | |
|------------------------|------------------|-----------------------------|-----------------------|-----------------------|-----------------------|
| | | 15,100 lb (6.8t) — Optional | | | |
| Counterweight Pieces | | A | B | B | B |
| | | 4,300 lb (2t) Fixed | 3,600 lb (1.6t) Piece | 3,600 lb (1.6t) Piece | 3,600 lb (1.6t) Piece |
| A | 4,300 lb (2t) | X | | | |
| A,B | 7,900 lb (3.6t) | X | X | | |
| A,B,B | 11,500 lb (5.2t) | X | X | X | |
| A,B,B,B | 15,100 lb (6.8t) | X | X | X | X |

Carrier

General

- 8 ft 6 in (2.6 m) wide
- 23 ft 10 in (7.26m) wheelbase (centerline of first axle to centerline of fourth axle)
- **Frame** — Box-type, torsion resistant, welded construction made of high tensile steel. Equipped with front and rear towing and tie-down lugs, tow connections, and access ladders.

Outriggers

Boxes — Two double box, front and rear welded to the carrier frame.

Beams and Jacks — Four single stage beams with Confined Area Lifting Capacities (CALC) provide selectable outrigger extensions of full, intermediate, and retracted positions. Jacks with integral check valve, hydraulically controlled from the operator's cab and on both sides of carrier. A fifth front bumper outrigger with integral check valve is hydraulically controlled from the operator's cab and at the front bumper of carrier.

Pontoons

- **Main** — Four lightweight, stow'n go, 23.5" x 27.25" (59.7 x 69.2cm) hexagonal steel pontoons with a contact area of 485 in² (3 129cm²) can be stored for road travel in either the storage racks on the carrier or under the outrigger boxes
- **Front Bumper** — One, lightweight, self-storing, 16" (40.6cm) diameter steel pontoon with a contact area of 201 in² (1 296cm²)

Jack Reaction

- **Main** — 76,000 lb (338.1kN) force and 157 psi (1 082.5kPa) ground bearing pressure
- **Front Bumper** — 37,000 lb (164.6kN) force and 184 psi (21 269kPa) ground bearing pressure

Steering and Axles

- Sheppard full integral master gear/slave gear steering system provides hydraulic assisted steering with mechanical link between steering wheel and wheels
- **Drive** — 8 x 4 for on/off-highway travel
- **Axle 1 & 2** — Tandem steered, non-driven
- **Axle 3 & 4** — Tandem non-steered, driven with reduction: 5.38 to 1
- **Inter-Axle Differential Lock** — Traction adding device that locks axle 3 with axle 4. Operated by a switch from the carrier cab.

Suspension

Front — Raydan Air Link walking beam air suspension

Rear — Raydan Air Link walking beam air suspension

- **Axle Lift System — Optional** — Improves rear tire ground clearance when the crane is up on outriggers. The rear air suspension can be raised or lowered with a switch in the carrier cab. The axle lift system can be controlled with a switch on both sides of the carrier.

Tires and Wheels

Front — Four (single) 425/65R22.5 tires on aluminum disc wheels

Rear — Eight (dual) 11R22.5 tires on aluminum outer/steel inner disc wheels

- Spare tires and wheels — optional

- Tire inflation kit — optional

Brakes

Service — Full air anti-lock (ABS) brakes on all wheel ends. Dual circuit compressed air system with air dryer.

Parking/Emergency — Spring loaded type, acting on 3rd and 4th axles automatically apply when air pressure drops below 40 psi (275.8kPa) in both circuits.

Electrical

Battery — Three batteries provide 12 volt starting and operation

Lights

- Front lighting includes two main daytime running/headlights, two high beam lights, two parking/directional indicators, and three cab marker lights.
- Side lighting includes three parking/directional indicators per side.
- Rear lighting includes two parking/directional indicators, two parking/brake lights, two reverse lights, three marker lights, and a license plate light.
- Other equipment includes hazard/warning system, two cab LED dome lights, instrument panel back lighting, and signal horn.
- One amber strobe beacon behind the cab.

Engine

| Specification | Cummins ISL9 | Cummins QSM |
|---|--|--|
| Emissions Compliance Level: | EPA 2013 (1) | Tier 3/Stage IIIA(2) |
| Maximum Allowable Sulfur Content of Fuel (PPM): | 15 | 5000 |
| Numbers of cylinders: | 6 | 6 |
| Cycle: | 4 | 4 |
| Bore and Stroke: inch (mm) | 4.49 x 5.69 (114x144) | 4.9 x 5.8 (125x147) |
| Piston Displacement: in ³ (L) | 543 (8.9) | 660 (10.8) |
| Max. Brake Horsepower: hp (kW) | 370 (276) @ 1,700 rpm 365 (272) @ 2,100 rpm | 400 (298) @ 1,800 rpm 375 (280) @ 2,100 rpm |
| Peak Torque: ft lb (Nm) | 1,250 (1 694.7) @ 1,400 rpm | 1,400 (1 898) @ 1,300 rpm |
| Alternator: volts — amps | 12 — 145 | 12 — 160 |
| Crankcase Capacity: qt (L) | 26 (24.6) | 40 (38) |

- Cruise control
- Cummins ISL — Three stage compression brake
- Cummins QSM — Two stage compression brake
- Thermostatically controlled, hydraulically driven radiator fan
- 120 volt engine block heater
- Ether injection system — optional (QSM only)
- Grid heater starting aid standard on ISL9
- Engine equipped with on-board diagnostics — ISL

(1) Can only be sold and/or operated where EPA2013 on-highway emission standards are accepted.

(2) Can only be sold and/or operated where Tier 3/Stage IIIA off-highway emission standards are accepted.

■ Transmission

Automated – ZF AS–TRONIC (no clutch pedal) manual transmission with 12 forward gears and 2 reverse gears.

■ Carrier Speeds and Gradeability

| ZF Astronic | | Governed Speed | | | | Gradeability (@ Peak Torque Except Creep @ Idle) | | |
|--------------|-----------|----------------|-------|-------------------|-------|--|-----------------------|-------|
| | | EPA 2013 | | Tier 3/Stage IIIA | | % Grade | | |
| Gear | Ratio | mph | km/h | mph | km/h | EPA 2013 | Tier 3/ Stage IIIA | |
| | | | | | | 12th | 0.78 | 60.69 |
| 11th | 1.00 | 47.22 | 75.97 | 47.03 | 75.68 | 2.35 | 3.92 | |
| 10th | 1.27 | 37.27 | 59.96 | 37.12 | 59.73 | 2.98 | 5.34 | |
| 9th | 1.63 | 28.99 | 46.64 | 28.87 | 46.46 | 3.83 | 7.19 | |
| 8th | 2.10 | 22.47 | 36.16 | 22.38 | 36.01 | 4.94 | 9.56 | |
| 7th | 2.70 | 17.49 | 28.14 | 17.42 | 28.03 | 6.35 | 12.54 | |
| 6th | 3.55 | 13.29 | 21.39 | 13.24 | 21.30 | 8.35 | 16.74 | |
| 5th | 4.57 | 10.34 | 16.64 | 10.30 | 16.57 | 10.73 | 21.72 | |
| 4th | 5.78 | 8.16 | 13.14 | 8.13 | 13.08 | 13.59 | 27.71 | |
| 3rd | 7.44 | 6.35 | 10.22 | 6.33 | 10.18 | 17.47 | 35.81 | |
| 2nd | 9.59 | 4.92 | 7.92 | 4.90 | 7.88 | 22.54 | 43.10 | |
| 1st | 12.33 | 3.83 | 6.16 | 3.82 | 6.14 | 28.97 | 43.10 | |
| Reverse 1 | | 11.41 | 4.14 | 6.66 | 4.12 | 6.63 | 26.82 | 43.10 |
| Reverse 2 | | 8.88 | 5.32 | 8.56 | 5.30 | 8.52 | 20.87 | 42.90 |
| Creep @ idle | 2nd | 9.59 | 1.64 | 2.64 | 1.63 | 2.62 | 26.68 | 22.05 |
| | 1st | 12.33 | 1.27 | 2.04 | 1.27 | 2.04 | 34.29 | 28.52 |
| | Reverse 1 | 11.41 | 1.38 | 2.22 | 1.37 | 2.20 | 31.75 | 26.36 |
| | Reverse 2 | 8.88 | 1.77 | 2.85 | 1.77 | 2.84 | 24.70 | 20.37 |

Based on a gross vehicle weight of 78,000 lb (35 380kg)

■ Fuel Tank

- One 75 gal (283.9L) capacity tank
- One 10 gal (37.8L) capacity diesel exhaust fluid (DEF) plastic tank

■ Hydraulic System

All functions are hydraulically powered allowing positive, precise control with independent or simultaneous operation of all functions.

Main Pumps

- Four fixed displacement gear pumps with automatic disconnect for the main and auxiliary winches, swing, boom hoist, control circuit, and telescope for use when crane is in travel mode
- One fixed displacement gear pump for steering and the front bumper outrigger
- Two fixed displacement gear pumps for engine cooling fan and main outriggers. These pumps also provide flow to the winches and boom hoist for “pick & carry” mode. Operated by a switch in the carrier cab.
- Combined pump capacity of 190 gpm (719.2Lpm)

Hydraulic Reservoir – 144 gal (545.1L) capacity equipped with sight level gauge. Diffusers built in for deaeration.

Filtration – One 10 micron, full flow, return line filter. All oil is filtered prior to return to reservoir. Accessible for easy filter replacement.

■ Pump Drive

All pumps are mechanically driven by the diesel engine. Main and auxiliary winches, swing, boom hoist, control circuit, and telescope pumps are mounted to an automatic pump disconnect on the rear of the transmission to aid in cold weather starting as well as to reduce pump wear while traveling.

■ Lower Cab and Controls

Environmental Cab — Fully enclosed, one person cab of composite structure with acoustical insulation. Equipped with:

- Tinted and tempered glass windows
- Roll down left side window for ventilation
- Right side window
- Windshield wiper and washer
- Six way adjustable and air suspended driver's seat with seat belt
- Two adjustable rear view mirrors
- Engine dependent warm—water heater with air ducts for windshield defroster and cab floor
- Adjustable sun visor
- Two LED dome lights
- 12 volt connection
- Fire extinguisher

Air Conditioning — Integral with cab heating system utilizing the same ventilation outlets

Overhead Console — Located above the sun visor

- Document storage unit
- AM/FM Radio
- 12 volt accessory jack (switched)
- 12 volt accessory jack (unswitched)
- Strobe beacon switch

Camera Display — Located on dash console

- Displays right side of machine
- Displays rear view

Cab Instrumentation — Ergonomically positioned analog instrumentation for driving including:

- Speedometer with odometer, hourmeter, trip odometer
- Front and rear air pressure with warning indicator
- Engine coolant temperature with warning indicator
- Engine oil pressure with warning indicator
- Voltage indicator with warning indicator
- Fuel level
- Tachometer
- Diesel exhaust fluid with warning indicator (EPA 2013 Engine Only)

Right Side Console — Controls and indicators for:

- Transmission gear shifting
- Transmission gear selector
- Transmission digital readout
- Cruise controls
- Engine compression brake controls

Dash Mounted Controls For:

- Carrier lights
- Carrier/upper throttle control
- Engine cooling fan override
- Cab heater/air conditioning
- Console dimmer switch
- Anti—lock brake diagnostic switch
- Diesel particulate filter switch (EPA 2013 Engine Only)
- Park brake
- Pick & carry switch
- Inter—axle differential lock switch
- Engine ignition
- Rear axle lift system switch — optional
- Diesel particulate filter regeneration inhibit switch (EPA 2013 Engine Only)

Dash Mounted Indicator For:

- Check, stop, and service engine
- Turn signal indication
- Park brake
- Cruise activation
- High beam headlights
- Check anti—lock brake system
- Check anti—lock trailer brake system
- Diesel particulate filter indication (EPA 2013 Engine Only)
- High exhaust temperature indication (EPA 2013 Engine Only)
- Regeneration inhibit (EPA 2013 Engine Only)
- Wait to start (EPA 2013 Engine Only)
- Malfunction indicator lamp (EPA 2013 Engine Only)
- Engine air filter high restriction

Steering Column Controls For:

- Warning horn
- Turn indicators
- High beam headlights
- Steering wheel adjustments
- Intermittent windshield wiper and washer
- Hazard lights

Foot Controls For:

- Carrier service brakes
- Engine throttle

■ Additional Equipment

Standard:

- Aluminum full deck fenders with mud flaps
- Left and right bubble levels
- Air hose connection ports
- Clearance flags

Optional:

- Pneumatic and electrical quick disconnect connectors mounted on the rear for trailer or boom dolly brakes and lights
- Left side aluminum storage box
- Rear mounted pintle hook

Axle Loads

| Base crane with full tank of fuel and 4,300 lb (2.0t) counterweight | Gross Vehicle Weight ⁽¹⁾ | | Front Axles | | Rear Axles | |
|--|-------------------------------------|--------|-------------|--------|------------|--------|
| | lb | kg | lb | kg | lb | kg |
| | EPA 2013 | 65,428 | 29 678 | 29,264 | 13 274 | 36,164 |
| Tier 3/Stage IIIA | 65,651 | 29 779 | 29,624 | 13 437 | 36,027 | 16 342 |
| Driver in carrier cab | 250 | 113 | 328 | 149 | -78 | -35 |
| Rear pintle hook | 34 | 15 | -13 | -6 | 47 | 21 |
| Pneumatic and electrical connectors for trailer or boom dolly | 11 | 5 | -4 | -2 | 15 | 7 |
| Carrier aluminum storage box | 66 | 30 | 20 | 9 | 46 | 21 |
| Air ride lift system – rear axles | 52 | 24 | 7 | 3 | 45 | 20 |
| Ether injection | 5 | 2 | 5 | 2 | 0 | 0 |
| Hoist drum follower – main | 75 | 34 | -27 | -13 | 102 | 47 |
| Auxiliary winch with 450 ft (137.2m) of 5/8" (16mm) type "RB" rope | 414 | 188 | -98 | -45 | 512 | 232 |
| Hoist drum follower – auxiliary | 75 | 34 | -16 | -8 | 91 | 42 |
| Substitute 450 ft (137.2m) with 550 ft (167.6m) rope – auxiliary | 72 | 33 | -17 | -8 | 89 | 40 |
| Remove 550 ft (167.6m) of rope from rear (main) winch | -482 | -219 | 183 | 83 | -665 | -302 |
| Remove 450 ft (137.2m) of rope from front (auxiliary) winch | -396 | -180 | 95 | 43 | -491 | -223 |
| Air conditioner – operator's cab | 179 | 81 | 3 | 1 | 176 | 80 |
| 360° mechanical swing lock | 60 | 27 | 6 | 3 | 54 | 24 |
| One slab of counterweight on upper | 3,582 | 1 625 | -1,375 | -624 | 4,957 | 2 248 |
| Two slabs of counterweight on upper | 7,164 | 3 250 | -2,750 | -1 247 | 9,914 | 4 497 |
| Three slabs counterweight on upper | 10,746 | 4 874 | -4,125 | -1 871 | 14,871 | 6 745 |
| Floodlight to the front of boom base section | 10 | 5 | 15 | 7 | -5 | -2 |
| Fly mounting brackets to boom base section for fly options | 99 | 45 | 87 | 39 | 12 | 5 |
| 28.5 ft (8.7m) offsettable, one-piece lattice fly – stowed | 1,238 | 562 | 1,312 | 595 | -74 | -34 |
| 28.5–51 ft (8.7–15.5m) offsettable, two-piece (bi-fold) lattice fly – stowed | 1,830 | 830 | 1,810 | 821 | 20 | 9 |
| Auxiliary lifting sheave | 91 | 41 | 165 | 75 | -74 | -34 |
| 25 ton (22.7mt) 3-sheave hook block at boom head | 670 | 304 | 1,169 | 530 | -499 | -226 |
| 40 ton (36.3mt) 4-sheave hook block at boom head | 780 | 354 | 1,360 | 617 | -580 | -263 |
| 50 ton (45.4mt) 5-sheave hook block at boom head | 1,090 | 494 | 1,901 | 862 | -811 | -368 |
| 60 ton (54.4mt) 5-sheave hook block at boom head | 1,122 | 509 | 1,957 | 888 | -835 | -379 |
| 8.5 ton (7.7mt) hook ball at boom head | 360 | 163 | 641 | 291 | -281 | -127 |
| Hook block/ball storage box | 375 | 170 | -143 | -65 | 518 | 235 |
| 25 ton (22.7mt) 3-sheave hook block in storage box | 670 | 304 | -256 | -116 | 926 | 420 |
| 40 ton (36.3mt) 4-sheave hook block in storage box | 780 | 354 | -298 | -135 | 1,078 | 489 |
| 50 ton (45.4mt) 5-sheave hook block in storage box | 1,090 | 494 | -417 | -189 | 1,507 | 684 |
| 60 ton (54.4mt) 5-sheave hook block in storage box | 1,122 | 509 | -429 | -195 | 1,551 | 704 |
| 8.5 ton (7.7mt) hook ball in storage box | 360 | 163 | -138 | -63 | 498 | 226 |

| Counterweight Load Transfer | Front Axles | | Rear Axles | |
|--|-------------|-------|------------|--------|
| | lb | kg | lb | kg |
| Transfer one 3,600lb (1.6t) slab of counterweight to carrier deck | 4,091 | 1 856 | -4,091 | -1 856 |
| Transfer two 3,600lb (1.6t) slabs of counterweight to carrier deck | 8,182 | 3 711 | -8,182 | -3 711 |
| Transfer three 3,600lb (1.6t) slabs of counterweight to carrier deck | 12,273 | 5 567 | -12,273 | -5 567 |

| Axle | Maximum Load @ 65 mph (105km/h) |
|-------|--|
| Front | 45,400 lb (20 593kg) – aluminum disc wheels with 425/65R22.5 tires |
| Rear | 47,250 lb (21 432kg) – aluminum disc wheels with 11R22.5 tires |

(1) Adjust gross vehicle weight and axle loading according to component weight. All weights are ±3%.

Axle Loads with 2–Axle Boom Dolly

| Base crane with full tank of fuel and 4,300 lb (2.0t) counterweight | Gross Vehicle Weight ⁽¹⁾ | | Front Axles | | Rear Axles | | Dolly Axles | |
|--|-------------------------------------|--------|-------------|--------|------------|--------|-------------|--------|
| | lb | kg | lb | kg | lb | kg | lb | kg |
| | EPA 2013 | 65,428 | 29 678 | 27,392 | 12 425 | 27,303 | 12 384 | 10,733 |
| Tier 3/Stage IIIA | 65,651 | 29 779 | 27,652 | 12 543 | 27,266 | 12 368 | 10,733 | 4 868 |
| Nelson 2–axle boom dolly | 6,000 | 2 722 | 0 | 0 | 0 | 0 | 6,000 | 2 722 |
| Driver in carrier cab | 250 | 113 | 328 | 149 | –78 | –35 | 0 | 0 |
| Rear pintle hook | 34 | 15 | –13 | –6 | 47 | 21 | 0 | 0 |
| Pneumatic and electrical connectors for trailer or boom dolly | 11 | 5 | –4 | –2 | 15 | 7 | 0 | 0 |
| Carrier aluminum storage box | 66 | 30 | 20 | 9 | 46 | 21 | 0 | 0 |
| Air ride lift system – rear axles | 52 | 24 | 7 | 3 | 45 | 20 | 0 | 0 |
| Ether injection | 5 | 2 | 5 | 2 | 0 | 0 | 0 | 0 |
| Air conditioning – carrier | 58 | 26 | 83 | 38 | –25 | –11 | 0 | 0 |
| Hoist drum follower – main | 75 | 34 | 55 | 25 | 21 | 10 | 0 | 0 |
| Auxiliary winch with 450 ft (137.2m) of 5/8" (16mm) type "RB" rope | 414 | 188 | 253 | 115 | 161 | 73 | 0 | 0 |
| Hoist drum follower – auxiliary | 75 | 34 | 44 | 20 | 32 | 14 | 0 | 0 |
| Substitute 450 ft (137.2m) with 550 ft (167.6m) rope – auxiliary | 72 | 33 | 44 | 20 | 28 | 13 | 0 | 0 |
| Remove 550 ft (167.6m) of rope from rear (main) winch | –482 | –219 | –364 | –165 | –118 | –54 | 0 | 0 |
| Remove 450 ft (137.2m) of rope from front (auxiliary) winch | –396 | –180 | –243 | –110 | –153 | –69 | 0 | 0 |
| Air conditioner – operator's cab | 179 | 81 | 64 | 29 | 115 | 52 | 0 | 0 |
| 360° mechanical swing lock | 60 | 27 | 16 | 7 | 44 | 20 | 0 | 0 |
| One slab of counterweight on upper | 3,582 | 1 625 | 2,716 | 1 323 | 866 | 393 | 0 | 0 |
| Two slabs of counterweight on upper | 7,164 | 3 250 | 5,432 | 2 464 | 1,732 | 786 | 0 | 0 |
| Three slabs counterweight on upper | 10,746 | 4 874 | 8,148 | 3 696 | 2,598 | 1 178 | 0 | 0 |
| Floodlight to the front of boom base section | 10 | 5 | –1 | –0.5 | –1 | –0.5 | 12 | 5 |
| Fly mounting brackets to boom base section for fly options | 99 | 45 | 12 | 5 | 14 | 6 | 72 | 33 |
| 28.5 ft (8.7m) offsettable, one–piece lattice fly – stowed | 1,238 | 562 | 80 | 36 | 89 | 40 | 1,069 | 485 |
| 28.5–51 ft (8.7–15.5m) offsettable, two–piece (bi–fold) lattice fly – stowed | 1,830 | 830 | 163 | 74 | 182 | 83 | 1,484 | 673 |
| Auxiliary lifting sheave | 91 | 41 | –18 | –8 | –20 | –9 | 130 | 59 |
| 40 ton (36.3mt) 4–sheave hook block at boom head | 780 | 354 | –138 | –63 | –154 | –70 | 1,072 | 486 |
| 50 ton (45.4mt) 5–sheave hook block at boom head | 1,090 | 494 | –193 | –88 | –215 | –98 | 1,498 | 679 |
| 60 ton (54.4mt) 5–sheave hook block at boom head | 1,122 | 509 | –198 | –90 | –221 | –100 | 1,542 | 699 |
| 8.5 ton (7.7mt) hook ball at boom head | 360 | 163 | –68 | –31 | –76 | –34 | 504 | 229 |

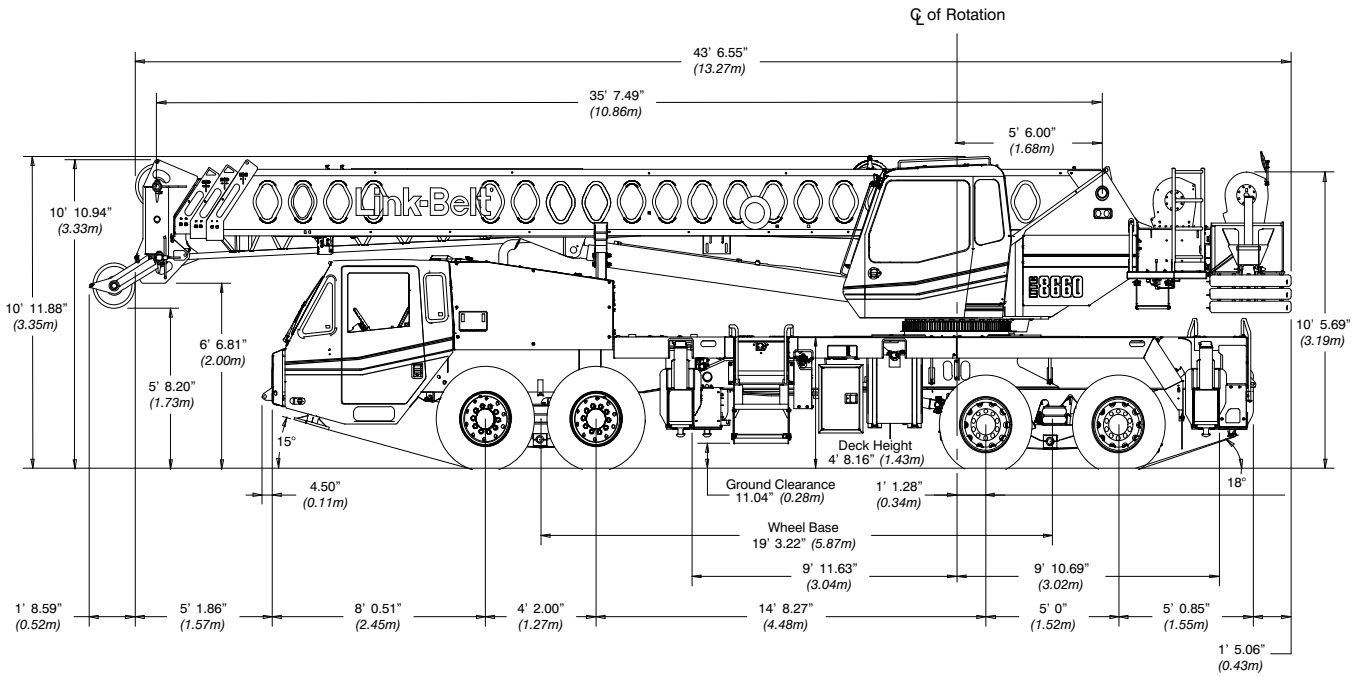
| Counterweight Load Transfer | Front Axles | | Rear Axles | | Dolly Axles | |
|--|-------------|--------|------------|--------|-------------|-------|
| | lb | kg | lb | kg | lb | kg |
| Transfer one 3,600lb (1.6t) slab of counterweight to boom dolly | –2,716 | –1 232 | –866 | –393 | 3,582 | 1 625 |
| Transfer two 3,600lb (1.6t) slabs of counterweight to boom dolly | –5,432 | –2 464 | –1,732 | –786 | 7,164 | 3 250 |
| Transfer three 3,600lb (1.6t) slabs of counterweight to boom dolly | –8,148 | –3 696 | –2,598 | –1 178 | 10,746 | 4 874 |

| Axle | Maximum Load @ 65 mph (105km/h) |
|-------|--|
| Front | 45,400 lb (20 593kg) – aluminum disc wheels with 425/65R22.5 tires |
| Rear | 47,250 lb (21 432kg) – aluminum disc wheels with 11R22.5 tires |

⁽¹⁾ Adjust gross vehicle weight and axle loading according to component weight. All weights are ±3%.

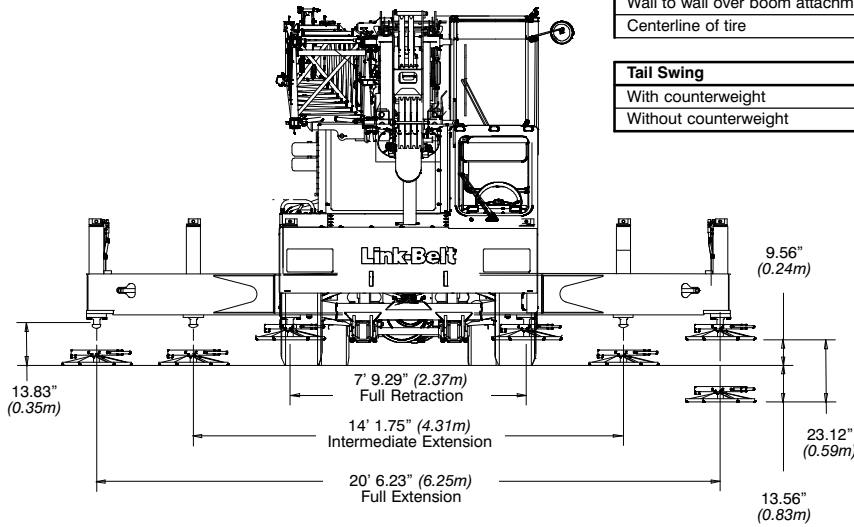
General Dimensions

■ EPA 2013



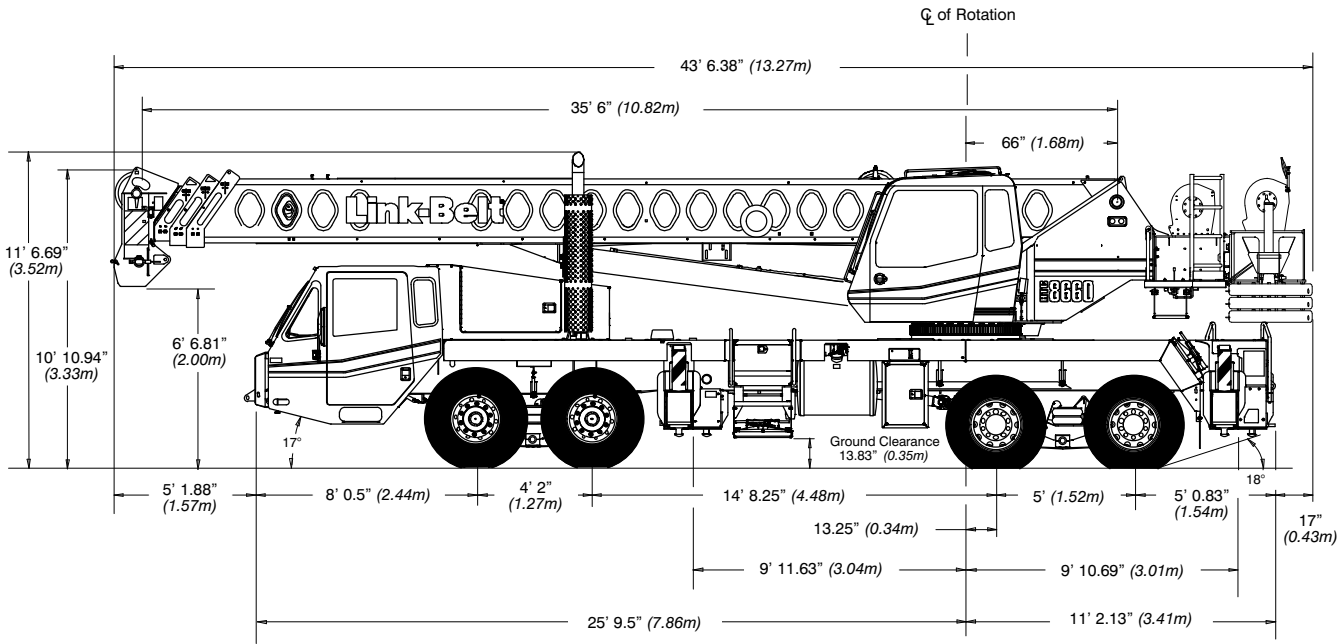
| Turning Radius | English | Metric |
|-----------------------------------|---------|--------|
| Wall to wall over carrier | 44' 1" | 13.4m |
| Wall to wall over boom | 45' 6" | 13.9m |
| Wall to wall over boom attachment | 46' 11" | 14.3m |
| Centerline of tire | 38' 7" | 11.8m |

| Tail Swing | English | Metric |
|-----------------------|-----------|--------|
| With counterweight | 12' 8.5" | 3.9m |
| Without counterweight | 12' 5.25" | 3.8m |



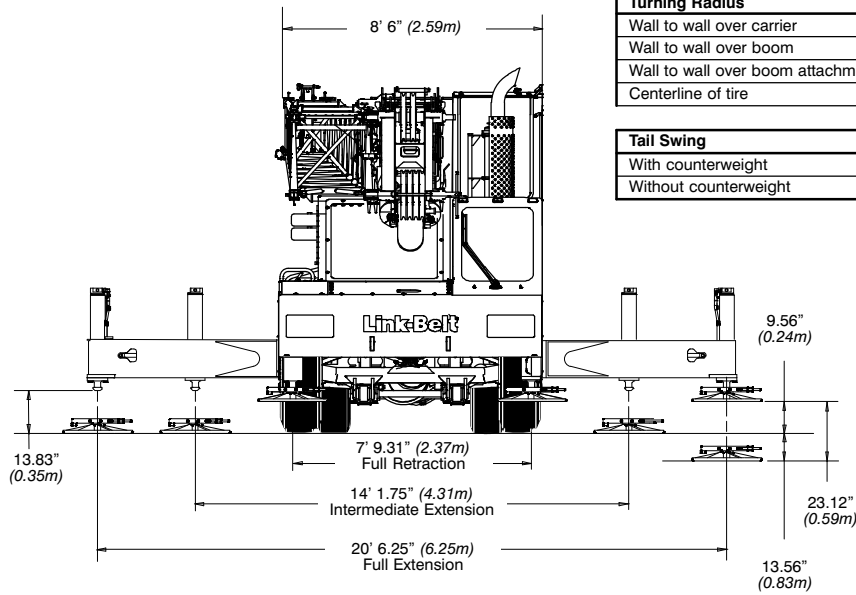
General Dimensions

■ Tier 3 / Stage IIIA

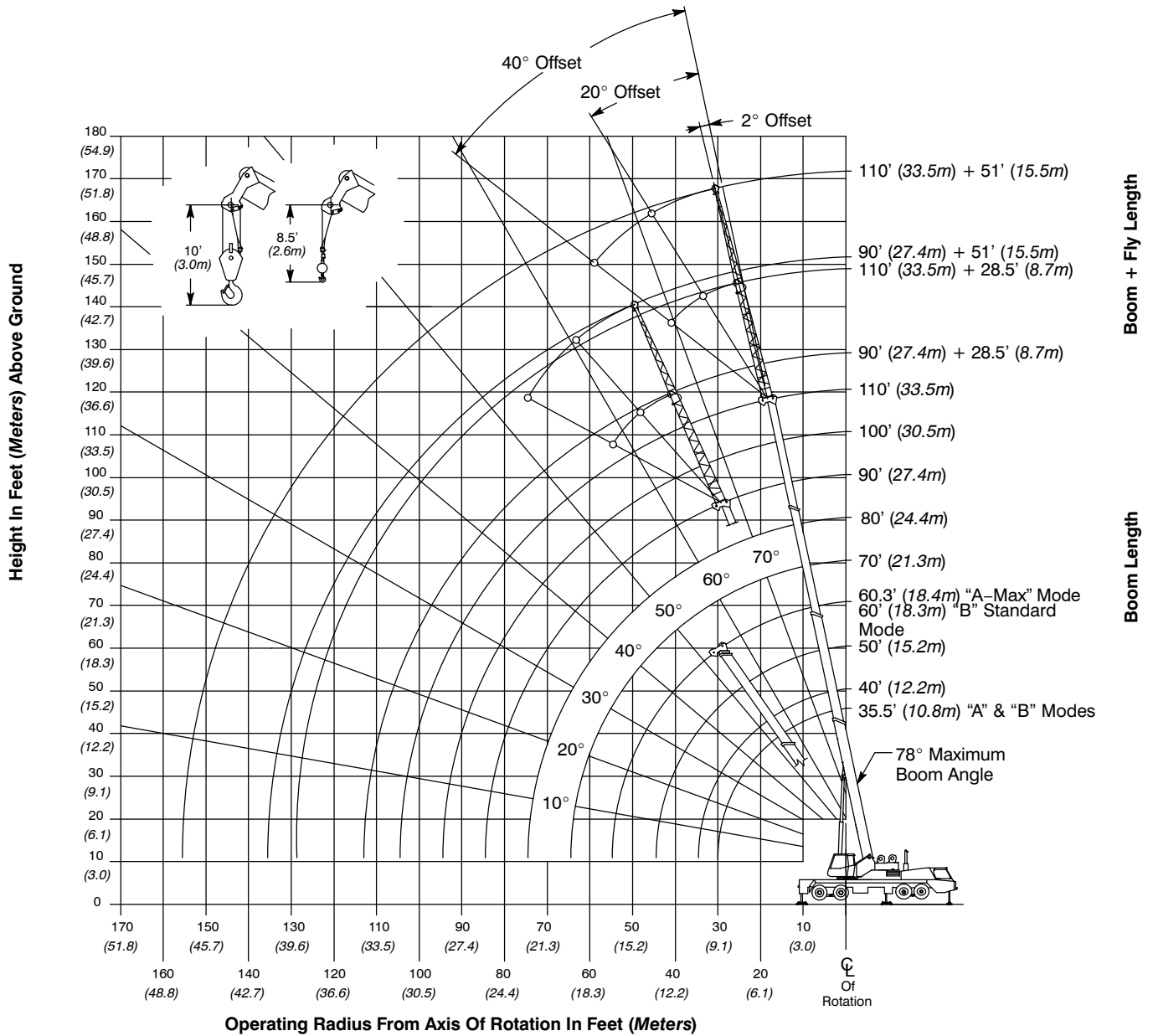


| Turning Radius | English | Metric |
|-----------------------------------|---------|--------|
| Wall to wall over carrier | 44' 1" | 13.4m |
| Wall to wall over boom | 45' 6" | 13.9m |
| Wall to wall over boom attachment | 46' 11" | 14.3m |
| Centerline of tire | 38' 7" | 11.8m |

| Tail Swing | English | Metric |
|-----------------------|-----------|--------|
| With counterweight | 12' 8.5" | 3.9m |
| Without counterweight | 12' 5.25" | 3.8m |



Working Range Diagram



Note: Boom and fly geometry shown are for unloaded condition and crane standing level on firm supporting surface. Boom deflection, subsequent radius, and boom angle change must be accounted for when applying load to hook.



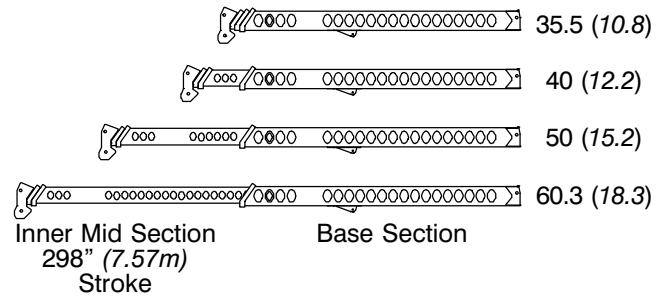
WARNING

Do Not Lower The Boom Below The Minimum Boom Angle For No Load Stability As Shown In The Lift Charts For The Boom Lengths Given. Loss Of Stability Will Occur Causing A Tipping Condition.

Boom Extend Modes

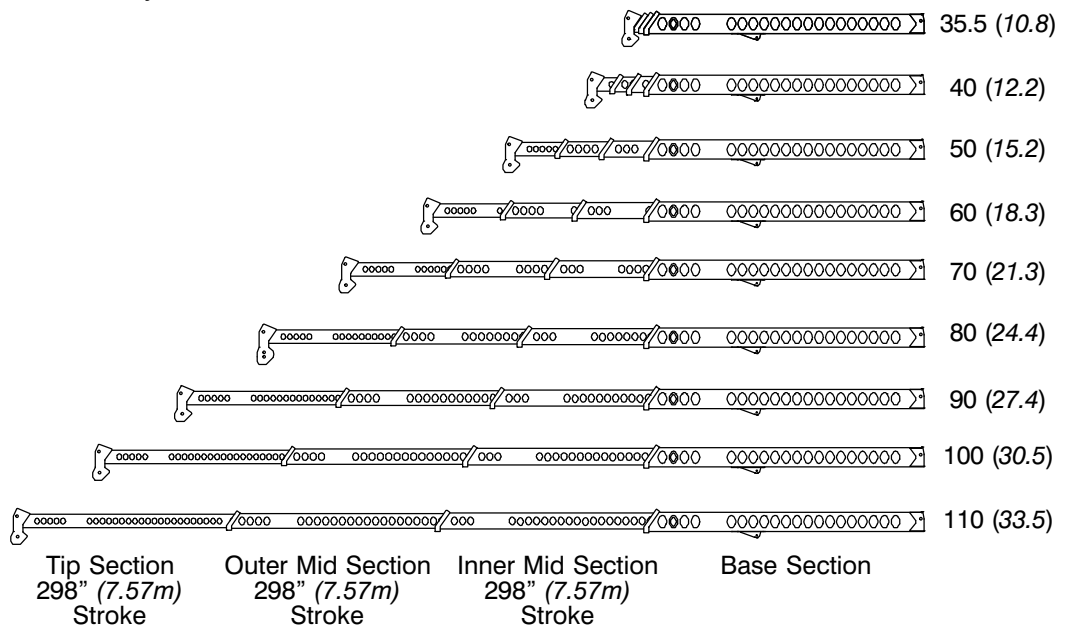
Boom Mode "A" (A-Max) Only inner mid section telescopes

Boom Length
ft (m)



Boom Mode "B" (Standard) Inner mid, outer mid, and tip sections telescope simultaneously

Boom Length
ft (m)



Main Boom Lift Capacity Charts – Standard

| 11,500 lb Counterweight – Fully Extended Outriggers – 360° Rotation (All Capacities Are Listed In Pounds) | | | | | | | | | | |
|--|------------------|--------|--------|--------|--------|--------|--------|--------|--------|----------------|
| Radius (ft) | Boom Length (ft) | | | | | | | | | Radius (ft) |
| | 35.5 | 40 | 50 | 60 | 70 | 80 | 90 | 100 | 110 | |
| 7 | 120,000* | | | | | | | | | 7 |
| 10 | 100,000 | 80,900 | 72,800 | | | | | | | 10 |
| 12 | 76,000 | 73,200 | 65,800 | 50,900 | 37,900 | | | | | 12 |
| 15 | 65,800 | 63,600 | 57,700 | 47,300 | 37,900 | 35,400 | | | | 15 |
| 20 | 52,500 | 52,000 | 47,500 | 39,300 | 37,900 | 34,700 | 28,900 | | | 20 |
| 25 | 40,500 | 40,300 | 40,000 | 37,900 | 37,900 | 34,300 | 28,300 | 24,000 | 19,500 | 25 |
| 30 | | 29,600 | 30,300 | 30,600 | 30,800 | 30,400 | 24,900 | 22,600 | 19,500 | 30 |
| 35 | | | 22,800 | 23,200 | 23,400 | 23,400 | 22,100 | 20,100 | 18,500 | 35 |
| 40 | | | 17,700 | 18,200 | 18,400 | 18,500 | 18,600 | 18,000 | 16,500 | 40 |
| 45 | | | | 14,600 | 14,800 | 15,000 | 15,000 | 15,100 | 14,700 | 45 |
| 50 | | | | 11,900 | 12,200 | 12,300 | 12,400 | 12,400 | 12,500 | 50 |
| 55 | | | | | 10,100 | 10,300 | 10,400 | 10,400 | 10,500 | 55 |
| 60 | | | | | 8,400 | 8,600 | 8,700 | 8,800 | 8,800 | 60 |
| 65 | | | | | | 7,200 | 7,400 | 7,400 | 7,500 | 65 |
| 70 | | | | | | 6,000 | 6,200 | 6,300 | 6,400 | 70 |
| 75 | | | | | | | 5,200 | 5,300 | 5,400 | 75 |
| 80 | | | | | | | 4,400 | 4,500 | 4,600 | 80 |
| 85 | | | | | | | | 3,800 | 3,900 | 85 |
| 90 | | | | | | | | 3,100 | 3,200 | 90 |
| 95 | | | | | | | | | 2,700 | 95 |
| 100 | | | | | | | | | 2,200 | 100 |

* Special Conditions Or Wire Rope Required

This information is not for crane operation. Operator must refer to the in-cab information for crane operation. Rated lifting capacities shown on fully extended outriggers do not exceed 85% of the tipping loads and on tires do not exceed 75% of the tipping loads.

11,500 lb Counterweight – On Tires – Stationary – Boom Centered Over Rear
(All Capacities Are Listed In Pounds)

| Radius (ft) | Boom Length (ft) | | | | | | Radius (ft) |
|-------------|------------------|--------|--------|--------|--------|--------|-------------|
| | 35.5 | 40 | 50 | 60 | 70 | 80 | |
| 10 | 49,000 | | | | | | 10 |
| 12 | 44,800 | 37,900 | 23,100 | | | | 12 |
| 15 | 37,000 | 37,400 | 24,500 | 15,800 | | | 15 |
| 20 | 23,600 | 23,900 | 24,500 | 17,600 | | | 20 |
| 25 | 16,400 | 16,700 | 17,300 | 17,600 | 13,300 | | 25 |
| 30 | | 12,300 | 12,800 | 13,100 | 13,300 | 13,200 | 30 |
| 35 | | | 9,700 | 10,100 | 10,300 | 10,500 | 35 |
| 40 | | | 7,500 | 7,800 | 8,100 | 8,200 | 40 |
| 45 | | | | 6,200 | 6,400 | 6,500 | 45 |
| 50 | | | | 4,800 | 5,000 | 5,200 | 50 |
| 55 | | | | | 4,000 | 4,100 | 55 |
| 60 | | | | | 3,100 | 3,200 | 60 |
| 65 | | | | | | 2,500 | 65 |
| 70 | | | | | | 1,900 | 70 |

11,500 lb Counterweight – On Tires – Pick & Carry (1 mph) – Boom Centered Over Rear
(All Capacities Are Listed In Pounds)

| Radius (ft) | Boom Length (ft) | | | | | | Radius (ft) |
|-------------|------------------|--------|--------|--------|--------|--------|-------------|
| | 35.5 | 40 | 50 | 60 | 70 | 80 | |
| 10 | 36,200 | | | | | | 10 |
| 12 | 32,900 | 33,100 | | | | | 12 |
| 15 | 28,800 | 29,000 | 24,000 | | | | 15 |
| 20 | 23,500 | 23,700 | 24,000 | 17,600 | | | 20 |
| 25 | 16,400 | 16,700 | 17,300 | 17,600 | 13,300 | | 25 |
| 30 | | 12,300 | 12,800 | 13,100 | 13,300 | 13,200 | 30 |
| 35 | | | 9,700 | 10,100 | 10,300 | 10,500 | 35 |
| 40 | | | 7,500 | 7,800 | 8,100 | 8,200 | 40 |
| 45 | | | | 6,200 | 6,400 | 6,500 | 45 |
| 50 | | | | 4,800 | 5,000 | 5,200 | 50 |
| 55 | | | | | 4,000 | 4,100 | 55 |
| 60 | | | | | 3,100 | 3,200 | 60 |
| 65 | | | | | | 2,500 | 65 |
| 70 | | | | | | 1,900 | 70 |

This information is not for crane operation. Operator must refer to the in-cab information for crane operation. Rated lifting capacities shown on fully extended outriggers do not exceed 85% of the tipping loads and on tires do not exceed 75% of the tipping loads.

Main Boom Lift Capacity Charts – Optional

| 15,100 lb Counterweight – Fully Extended Outriggers – 360° Rotation (All Capacities Are Listed In Pounds) | | | | | | | | | | |
|--|------------------|--------|--------|--------|--------|--------|--------|--------|--------|----------------|
| Radius (ft) | Boom Length (ft) | | | | | | | | | Radius (ft) |
| | 35.5 | 40 | 50 | 60 | 70 | 80 | 90 | 100 | 110 | |
| 7 | 120,000* | | | | | | | | | 7 |
| 10 | 100,000 | 80,900 | 72,800 | | | | | | | 10 |
| 12 | 76,000 | 73,200 | 65,800 | 50,900 | 37,900 | | | | | 12 |
| 15 | 65,800 | 63,600 | 57,700 | 47,300 | 37,900 | 35,400 | | | | 15 |
| 20 | 53,400 | 52,000 | 47,500 | 39,300 | 37,900 | 34,700 | 28,900 | | | 20 |
| 25 | 41,900 | 41,700 | 40,300 | 37,900 | 37,900 | 34,300 | 28,300 | 24,000 | 19,500 | 25 |
| 30 | | 32,900 | 33,600 | 33,900 | 32,900 | 30,400 | 24,900 | 22,600 | 19,500 | 30 |
| 35 | | | 25,400 | 25,800 | 25,900 | 26,100 | 22,100 | 20,100 | 18,500 | 35 |
| 40 | | | 19,900 | 20,400 | 20,600 | 20,700 | 19,800 | 18,000 | 16,500 | 40 |
| 45 | | | | 16,500 | 16,700 | 16,800 | 16,900 | 16,200 | 14,700 | 45 |
| 50 | | | | 13,500 | 13,800 | 13,900 | 14,000 | 14,100 | 13,300 | 50 |
| 55 | | | | | 11,500 | 11,700 | 11,800 | 11,800 | 11,900 | 55 |
| 60 | | | | | 9,700 | 9,900 | 10,000 | 10,100 | 10,200 | 60 |
| 65 | | | | | | 8,400 | 8,600 | 8,600 | 8,700 | 65 |
| 70 | | | | | | 7,100 | 7,300 | 7,400 | 7,500 | 70 |
| 75 | | | | | | | 6,200 | 6,300 | 6,400 | 75 |
| 80 | | | | | | | 5,300 | 5,400 | 5,500 | 80 |
| 85 | | | | | | | | 4,600 | 4,700 | 85 |
| 90 | | | | | | | | 4,000 | 4,000 | 90 |
| 95 | | | | | | | | | 3,400 | 95 |
| 100 | | | | | | | | | 2,900 | 100 |

* Special Conditions Or Wire Rope Required

This information is not for crane operation. Operator must refer to the in-cab information for crane operation. Rated lifting capacities shown on fully extended outriggers do not exceed 85% of the tipping loads and on tires do not exceed 75% of the tipping loads.

15,100 lb Counterweight – On Tires – Stationary – Boom Centered Over Rear
(All Capacities Are Listed In Pounds)

| Radius (ft) | Boom Length (ft) | | | | | | Radius (ft) |
|-------------|------------------|--------|--------|--------|--------|--------|-------------|
| | 35.5 | 40 | 50 | 60 | 70 | 80 | |
| 10 | 49,000 | | | | | | 10 |
| 12 | 44,800 | 44,700 | | | | | 12 |
| 15 | 39,600 | 39,400 | 29,200 | | | | 15 |
| 20 | 26,000 | 26,300 | 26,900 | 19,500 | | | 20 |
| 25 | 18,200 | 18,600 | 19,100 | 19,500 | 14,800 | | 25 |
| 30 | | 13,800 | 14,300 | 14,600 | 14,800 | 14,200 | 30 |
| 35 | | | 11,000 | 11,300 | 11,600 | 11,700 | 35 |
| 40 | | | 8,600 | 8,900 | 9,200 | 9,300 | 40 |
| 45 | | | | 7,100 | 7,300 | 7,500 | 45 |
| 50 | | | | 5,700 | 5,900 | 6,100 | 50 |
| 55 | | | | | 4,700 | 4,900 | 55 |
| 60 | | | | | 3,800 | 4,000 | 60 |
| 65 | | | | | | 3,200 | 65 |
| 70 | | | | | | 2,500 | 70 |

15,100 lb Counterweight – On Tires – Pick & Carry (1 mph) – Boom Centered Over Rear
(All Capacities Are Listed In Pounds)

| Radius (ft) | Boom Length (ft) | | | | | | Radius (ft) |
|-------------|------------------|--------|--------|--------|--------|--------|-------------|
| | 35.5 | 40 | 50 | 60 | 70 | 80 | |
| 10 | 36,200 | | | | | | 10 |
| 12 | 32,900 | 33,100 | | | | | 12 |
| 15 | 28,800 | 29,000 | 29,200 | | | | 15 |
| 20 | 23,500 | 23,700 | 24,000 | 19,500 | | | 20 |
| 25 | 18,200 | 18,600 | 19,100 | 19,500 | 14,800 | | 25 |
| 30 | | 13,800 | 14,300 | 14,600 | 14,800 | 14,200 | 30 |
| 35 | | | 11,000 | 11,300 | 11,600 | 11,700 | 35 |
| 40 | | | 8,600 | 8,900 | 9,200 | 9,300 | 40 |
| 45 | | | | 7,100 | 7,300 | 7,500 | 45 |
| 50 | | | | 5,700 | 5,900 | 6,100 | 50 |
| 55 | | | | | 4,700 | 4,900 | 55 |
| 60 | | | | | 3,800 | 4,000 | 60 |
| 65 | | | | | | 3,200 | 65 |
| 70 | | | | | | 2,500 | 70 |

This information is not for crane operation. Operator must refer to the in-cab information for crane operation. Rated lifting capacities shown on fully extended outriggers do not exceed 85% of the tipping loads and on tires do not exceed 75% of the tipping loads.

Fly Attachment Lift Capacity Charts – Optional

| 11,500 lb Counterweight – Fully Extended Outriggers – 360° Rotation (All Capacities Are Listed In Pounds) | | | | | | | | |
|--|-----------------|-------|---|-----------------|-------|---|-----------------|-------|
| 110 ft Main Boom Length 2° Fly Offset | | | 110 ft Main Boom Length 20° Fly Offset | | | 110 ft Main Boom Length 40° Fly Offset | | |
| Radius (ft) | Fly Length (ft) | | Radius (ft) | Fly Length (ft) | | Radius (ft) | Fly Length (ft) | |
| | 28.5 | 51 | | 28.5 | 51 | | 28.5 | 51 |
| 35 | 9,400 | | 35 | | | 35 | | |
| 40 | 9,400 | | 40 | | | 40 | | |
| 45 | 9,400 | 6,200 | 45 | 9,600 | | 45 | | |
| 50 | 9,400 | 6,200 | 50 | 9,200 | | 50 | 7,600 | |
| 55 | 9,300 | 6,200 | 55 | 8,600 | | 55 | 7,400 | |
| 60 | 8,600 | 6,200 | 60 | 8,000 | 4,900 | 60 | 7,200 | |
| 65 | 8,000 | 6,100 | 65 | 7,400 | 4,700 | 65 | 7,000 | |
| 70 | 7,000 | 5,800 | 70 | 7,000 | 4,500 | 70 | 6,600 | |
| 75 | 6,000 | 5,400 | 75 | 6,500 | 4,300 | 75 | 6,200 | 3,500 |
| 80 | 5,200 | 5,000 | 80 | 5,600 | 4,200 | 80 | 5,900 | 3,400 |
| 85 | 4,400 | 4,700 | 85 | 4,800 | 4,000 | 85 | 5,200 | 3,300 |
| 90 | 3,800 | 4,300 | 90 | 4,200 | 3,900 | 90 | 4,400 | 3,300 |
| 95 | 3,200 | 3,700 | 95 | 3,600 | 3,700 | 95 | 3,800 | 3,200 |
| 100 | 2,700 | 3,200 | 100 | 3,000 | 3,600 | 100 | 3,200 | 3,200 |
| 105 | 2,300 | 2,700 | 105 | 2,500 | 3,300 | 105 | 2,700 | 3,100 |
| 110 | 1,900 | 2,300 | 110 | 2,100 | 2,800 | 110 | 2,200 | 3,100 |
| 115 | 1,500 | 2,000 | 115 | 1,700 | 2,400 | 115 | | 2,700 |
| 120 | 1,200 | 1,600 | 120 | 1,300 | 2,000 | 120 | | 2,300 |
| 125 | | 1,300 | 125 | | 1,700 | 125 | | 1,900 |
| 130 | | | 130 | | 1,300 | 130 | | 1,500 |
| 135 | | | 135 | | | 135 | | 1,100 |

This information is not for crane operation. Operator must refer to the in-cab information for crane operation. Rated lifting capacities shown on fully extended outriggers do not exceed 85% of the tipping loads and on tires do not exceed 75% of the tipping loads.

| 15,100 lb Counterweight – Fully Extended Outriggers – 360° Rotation (All Capacities Are Listed In Pounds) | | | | | | | | |
|--|-----------------|-------|---|-----------------|-------|---|-----------------|-------|
| 110 ft Main Boom Length 2° Fly Offset | | | 110 ft Main Boom Length 20° Fly Offset | | | 110 ft Main Boom Length 40° Fly Offset | | |
| Radius (ft) | Fly Length (ft) | | Radius (ft) | Fly Length (ft) | | Radius (ft) | Fly Length (ft) | |
| | 28.5 | 51 | | 28.5 | 51 | | 28.5 | 51 |
| 35 | 9,400 | | 35 | | | 35 | | |
| 40 | 9,400 | | 40 | | | 40 | | |
| 45 | 9,400 | 6,200 | 45 | 9,600 | | 45 | | |
| 50 | 9,400 | 6,200 | 50 | 9,200 | | 50 | 7,600 | |
| 55 | 9,300 | 6,200 | 55 | 8,600 | | 55 | 7,400 | |
| 60 | 8,600 | 6,200 | 60 | 8,000 | 4,900 | 60 | 7,200 | |
| 65 | 8,000 | 6,100 | 65 | 7,400 | 4,700 | 65 | 7,000 | |
| 70 | 7,500 | 5,800 | 70 | 7,000 | 4,500 | 70 | 6,600 | |
| 75 | 7,000 | 5,400 | 75 | 6,500 | 4,300 | 75 | 6,200 | 3,500 |
| 80 | 6,100 | 5,000 | 80 | 6,200 | 4,200 | 80 | 5,900 | 3,400 |
| 85 | 5,300 | 4,700 | 85 | 5,700 | 4,000 | 85 | 5,200 | 3,300 |
| 90 | 4,600 | 4,400 | 90 | 5,000 | 3,900 | 90 | 4,400 | 3,300 |
| 95 | 4,000 | 4,100 | 95 | 4,300 | 3,700 | 95 | 3,800 | 3,200 |
| 100 | 3,500 | 3,900 | 100 | 3,700 | 3,600 | 100 | 3,200 | 3,200 |
| 105 | 3,000 | 3,400 | 105 | 3,200 | 3,400 | 105 | 2,700 | 3,100 |
| 110 | 2,500 | 3,000 | 110 | 2,700 | 3,300 | 110 | 2,200 | 3,100 |
| 115 | 2,200 | 2,600 | 115 | 2,300 | 3,000 | 115 | | 3,000 |
| 120 | 1,800 | 2,200 | 120 | 1,900 | 2,600 | 120 | | 2,800 |
| 125 | 1,500 | 1,900 | 125 | 1,500 | 2,200 | 125 | | 2,400 |
| 130 | 1,200 | 1,600 | 130 | | 1,900 | 130 | | 2,000 |
| 135 | | 1,300 | 135 | | 1,600 | 135 | | 1,700 |
| 140 | | | 140 | | 1,300 | 140 | | |

This information is not for crane operation. Operator must refer to the in-cab information for crane operation. Rated lifting capacities shown on fully extended outriggers do not exceed 85% of the tipping loads and on tires do not exceed 75% of the tipping loads.

Main Boom Lift Capacity Charts – Optional (Metric)

| 5.2t Counterweight – Fully Extended Outriggers – 360° Rotation (All Capacities Are Listed In Kilograms) | | | | | | | | | | |
|--|-----------------|--------|--------|--------|--------|--------|--------|--------|-------|---------------|
| Radius (m) | Boom Length (m) | | | | | | | | | Radius (m) |
| | 10.82 | 12.2 | 15.2 | 18.3 | 21.3 | 24.4 | 27.4 | 30.5 | 33.53 | |
| 2.5 | 50 000 | | | | | | | | | 2.5 |
| 3 | 45 360 | 36 650 | 33 300 | | | | | | | 3 |
| 3.5 | 35 200 | 34 100 | 30 600 | | | | | | | 3.5 |
| 4 | 32 600 | 31 450 | 28 300 | 23 050 | 17 150 | | | | | 4 |
| 4.5 | 30 200 | 29 150 | 26 400 | 21 650 | 17 150 | | | | | 4.5 |
| 5 | 28 050 | 27 300 | 24 700 | 20 200 | 17 150 | 16 050 | | | | 5 |
| 6 | 24 200 | 23 900 | 21 800 | 18 000 | 17 150 | 15 700 | 13 100 | | | 6 |
| 7 | 19 850 | 19 650 | 19 350 | 17 150 | 17 150 | 15 700 | 13 100 | 10 850 | | 7 |
| 8 | 15 100 | 15 350 | 15 550 | 15 700 | 15 800 | 15 100 | 12 450 | 10 850 | 8 800 | 8 |
| 9 | 11 950 | 12 200 | 12 450 | 12 600 | 12 650 | 12 750 | 11 450 | 10 350 | 8 800 | 9 |
| 10 | | 9 950 | 10 300 | 10 400 | 10 500 | 10 550 | 10 550 | 9 550 | 8 800 | 10 |
| 12 | | | 7 300 | 7 500 | 7 550 | 7 600 | 7 650 | 7 650 | 7 600 | 12 |
| 14 | | | | 5 600 | 5 700 | 5 750 | 5 800 | 5 800 | 5 850 | 14 |
| 16 | | | | 4 300 | 4 450 | 4 500 | 4 550 | 4 550 | 4 600 | 16 |
| 18 | | | | | 3 450 | 3 550 | 3 600 | 3 600 | 3 650 | 18 |
| 20 | | | | | | 2 800 | 2 850 | 2 900 | 2 950 | 20 |
| 22 | | | | | | 2 250 | 2 300 | 2 350 | 2 350 | 22 |
| 24 | | | | | | | 1 850 | 1 850 | 1 900 | 24 |
| 26 | | | | | | | | 1 500 | 1 500 | 26 |
| 28 | | | | | | | | 1 150 | 1 200 | 28 |
| 30 | | | | | | | | | 900 | 30 |

This information is not for crane operation. Operator must refer to the in-cab information for crane operation. Rated lifting capacities shown on fully extended outriggers do not exceed 75% of the tipping loads and on tires do not exceed 65% of the tipping loads.

| 5.2t Counterweight – On Tires – Stationary – Boom Centered Over Rear (All Capacities Are Listed In Kilograms) | | | | | | | |
|---|-----------------|--------|-------|-------|-------|-------|------------|
| Radius (m) | Boom Length (m) | | | | | | Radius (m) |
| | 10.82 | 12.2 | 15.2 | 18.3 | 21.3 | 24.4 | |
| 3 | 22 400 | | | | | | 3 |
| 3.5 | 20 800 | 17 150 | | | | | 3.5 |
| 4 | 17 950 | 17 150 | | | | | 4 |
| 4.5 | 14 900 | 15 050 | 9 850 | | | | 4.5 |
| 5 | 12 650 | 12 800 | 9 850 | | | | 5 |
| 6 | 9 500 | 9 650 | 9 850 | 7 900 | | | 6 |
| 7 | 7 400 | 7 550 | 7 750 | 7 900 | | | 7 |
| 8 | 5 900 | 6 050 | 6 250 | 6 400 | 5 350 | | 8 |
| 9 | 4 800 | 4 950 | 5 150 | 5 300 | 5 350 | 5 400 | 9 |
| 10 | | 4 100 | 4 300 | 4 450 | 4 500 | 4 600 | 10 |
| 12 | | | 3 050 | 3 150 | 3 250 | 3 300 | 12 |
| 14 | | | | 2 300 | 2 400 | 2 450 | 14 |
| 16 | | | | 1 650 | 1 750 | 1 800 | 16 |
| 18 | | | | | 1 250 | 1 350 | 18 |
| 20 | | | | | | 950 | 20 |
| 22 | | | | | | 650 | 22 |

| 5.2t Counterweight – On Tires – Pick & Carry (1.6km/h) – Boom Centered Over Rear (All Capacities Are Listed In Kilograms) | | | | | | | |
|---|-----------------|--------|-------|-------|-------|-------|------------|
| Radius (m) | Boom Length (m) | | | | | | Radius (m) |
| | 10.82 | 12.2 | 15.2 | 18.3 | 21.3 | 24.4 | |
| 3 | 16 550 | | | | | | 3 |
| 3.5 | 15 300 | 15 350 | | | | | 3.5 |
| 4 | 14 200 | 14 250 | | | | | 4 |
| 4.5 | 13 200 | 13 300 | 9 850 | | | | 4.5 |
| 5 | 12 300 | 12 400 | 9 850 | | | | 5 |
| 6 | 9 500 | 9 650 | 9 850 | 7 900 | | | 6 |
| 7 | 7 400 | 7 550 | 7 750 | 7 900 | | | 7 |
| 8 | 5 900 | 6 050 | 6 250 | 6 400 | 5 350 | | 8 |
| 9 | 4 800 | 4 950 | 5 150 | 5 300 | 5 350 | 5 400 | 9 |
| 10 | | 4 100 | 4 300 | 4 450 | 4 500 | 4 600 | 10 |
| 12 | | | 3 050 | 3 150 | 3 250 | 3 300 | 12 |
| 14 | | | | 2 300 | 2 400 | 2 450 | 14 |
| 16 | | | | 1 650 | 1 750 | 1 800 | 16 |
| 18 | | | | | 1 250 | 1 350 | 18 |
| 20 | | | | | | 950 | 20 |
| 22 | | | | | | 650 | 22 |

This information is not for crane operation. Operator must refer to the in-cab information for crane operation. Rated lifting capacities shown on fully extended outriggers do not exceed 75% of the tipping loads and on tires do not exceed 65% of the tipping loads.

| 6.8t Counterweight – Fully Extended Outriggers – 360° Rotation (All Capacities Are Listed In Kilograms) | | | | | | | | | | |
|---|-----------------|--------|--------|--------|--------|--------|--------|--------|-------|---------------|
| Radius (m) | Boom Length (m) | | | | | | | | | Radius (m) |
| | 10.82 | 12.2 | 15.2 | 18.3 | 21.3 | 24.4 | 27.4 | 30.5 | 33.53 | |
| 2.5 | 50 000 | | | | | | | | | 2.5 |
| 3 | 45 360 | 36 650 | 33 300 | | | | | | | 3 |
| 3.5 | 35 200 | 34 100 | 30 600 | | | | | | | 3.5 |
| 4 | 32 600 | 31 450 | 28 300 | 23 050 | 17 150 | | | | | 4 |
| 4.5 | 30 200 | 29 150 | 26 400 | 21 650 | 17 150 | | | | | 4.5 |
| 5 | 28 050 | 27 300 | 24 700 | 20 200 | 17 150 | 16 050 | | | | 5 |
| 6 | 24 550 | 23 900 | 21 800 | 18 000 | 17 150 | 15 700 | 13 100 | | | 6 |
| 7 | 21 000 | 20 900 | 19 550 | 17 150 | 17 150 | 15 700 | 13 100 | 10 850 | | 7 |
| 8 | 16 750 | 16 950 | 17 150 | 17 150 | 16 650 | 15 100 | 12 450 | 10 850 | 8 800 | 8 |
| 9 | 13 050 | 13 550 | 13 850 | 13 950 | 14 050 | 13 900 | 11 450 | 10 350 | 8 800 | 9 |
| 10 | | 11 100 | 11 450 | 11 550 | 11 600 | 11 650 | 10 550 | 9 550 | 8 800 | 10 |
| 12 | | | 8 200 | 8 400 | 8 450 | 8 500 | 8 550 | 8 250 | 7 600 | 12 |
| 14 | | | | 6 350 | 6 450 | 6 500 | 6 500 | 6 550 | 6 550 | 14 |
| 16 | | | | 4 900 | 5 050 | 5 100 | 5 150 | 5 200 | 5 200 | 16 |
| 18 | | | | | 4 000 | 4 100 | 4 150 | 4 150 | 4 200 | 18 |
| 20 | | | | | | 3 300 | 3 350 | 3 400 | 3 400 | 20 |
| 22 | | | | | | 2 650 | 2 700 | 2 750 | 2 800 | 22 |
| 24 | | | | | | | 2 200 | 2 250 | 2 300 | 24 |
| 26 | | | | | | | | 1 850 | 1 850 | 26 |
| 28 | | | | | | | | 1 500 | 1 500 | 28 |
| 30 | | | | | | | | | 1 200 | 30 |

This information is not for crane operation. Operator must refer to the in-cab information for crane operation. Rated lifting capacities shown on fully extended outriggers do not exceed 75% of the tipping loads and on tires do not exceed 65% of the tipping loads.

| 6.8t Counterweight – On Tires – Stationary – Boom Centered Over Rear (All Capacities Are Listed In Kilograms) | | | | | | | |
|---|-----------------|--------|--------|-------|-------|-------|------------|
| Radius (m) | Boom Length (m) | | | | | | Radius (m) |
| | 10.82 | 12.2 | 15.2 | 18.3 | 21.3 | 24.4 | |
| 3 | 22 350 | | | | | | 3 |
| 3.5 | 20 800 | 17 150 | | | | | 3.5 |
| 4 | 19 400 | 17 150 | | | | | 4 |
| 4.5 | 16 300 | 16 450 | 13 400 | | | | 4.5 |
| 5 | 13 850 | 14 000 | 13 400 | | | | 5 |
| 6 | 10 450 | 10 600 | 10 800 | 8 700 | | | 6 |
| 7 | 8 200 | 8 350 | 8 550 | 8 700 | | | 7 |
| 8 | 6 600 | 6 750 | 6 950 | 7 100 | 5 950 | | 8 |
| 9 | 5 400 | 5 550 | 5 750 | 5 900 | 5 950 | 6 000 | 9 |
| 10 | | 4 600 | 4 850 | 4 950 | 5 050 | 5 100 | 10 |
| 12 | | | 3 500 | 3 600 | 3 700 | 3 750 | 12 |
| 14 | | | | 2 650 | 2 750 | 2 800 | 14 |
| 16 | | | | 2 000 | 2 050 | 2 150 | 16 |
| 18 | | | | | 1 550 | 1 600 | 18 |
| 20 | | | | | | 1 200 | 20 |
| 22 | | | | | | 850 | 22 |

| 6.8t Counterweight – On Tires – Pick & Carry (1.6km/h) – Boom Centered Over Rear (All Capacities Are Listed In Kilograms) | | | | | | | |
|---|-----------------|--------|--------|-------|-------|-------|------------|
| Radius (m) | Boom Length (m) | | | | | | Radius (m) |
| | 10.82 | 12.2 | 15.2 | 18.3 | 21.3 | 24.4 | |
| 3 | 16 500 | | | | | | 3 |
| 3.5 | 15 300 | 15 350 | | | | | 3.5 |
| 4 | 14 200 | 14 250 | | | | | 4 |
| 4.5 | 13 200 | 13 300 | 13 400 | | | | 4.5 |
| 5 | 12 300 | 12 400 | 12 500 | | | | 5 |
| 6 | 10 450 | 10 600 | 10 800 | 8 700 | | | 6 |
| 7 | 8 200 | 8 350 | 8 550 | 8 700 | | | 7 |
| 8 | 6 600 | 6 750 | 6 950 | 7 100 | 5 950 | | 8 |
| 9 | 5 400 | 5 550 | 5 750 | 5 900 | 5 950 | 6 000 | 9 |
| 10 | | 4 600 | 4 850 | 4 950 | 5 050 | 5 100 | 10 |
| 12 | | | 3 500 | 3 600 | 3 700 | 3 750 | 12 |
| 14 | | | | 2 650 | 2 750 | 2 800 | 14 |
| 16 | | | | 2 000 | 2 050 | 2 150 | 16 |
| 18 | | | | | 1 550 | 1 600 | 18 |
| 20 | | | | | | 1 200 | 20 |
| 22 | | | | | | 850 | 22 |

This information is not for crane operation. Operator must refer to the in-cab information for crane operation. Rated lifting capacities shown on fully extended outriggers do not exceed 75% of the tipping loads and on tires do not exceed 65% of the tipping loads.

Fly Attachment Lift Capacity Charts – Optional (Metric)

| 5.2t Counterweight – Fully Extended Outriggers – 360° Rotation (All Capacities Are Listed In Kilograms) | | | | | | | | |
|--|----------------|-------|---|----------------|-------|---|----------------|-------|
| 33.53m Main Boom Length 2° Fly Offset | | | 33.53m Main Boom Length 20° Fly Offset | | | 33.53m Main Boom Length 40° Fly Offset | | |
| Radius (m) | Fly Length (m) | | Radius (m) | Fly Length (m) | | Radius (m) | Fly Length (m) | |
| | 8.69 | 15.54 | | 8.69 | 15.54 | | 8.69 | 15.54 |
| 12 | 4 300 | | 12 | | | 12 | | |
| 14 | 4 300 | 2 800 | 14 | 4 300 | | 14 | | |
| 16 | 4 300 | 2 800 | 16 | 4 050 | | 16 | 3 400 | |
| 18 | 3 900 | 2 800 | 18 | 3 650 | 2 250 | 18 | 3 300 | |
| 20 | 3 200 | 2 750 | 20 | 3 350 | 2 100 | 20 | 3 150 | |
| 22 | 2 600 | 2 550 | 22 | 2 800 | 2 000 | 22 | 2 900 | 1 600 |
| 24 | 2 150 | 2 300 | 24 | 2 350 | 1 900 | 24 | 2 500 | 1 550 |
| 26 | 1 750 | 1 950 | 26 | 1 900 | 1 800 | 26 | 2 050 | 1 500 |
| 28 | 1 400 | 1 600 | 28 | 1 550 | 1 750 | 28 | 1 650 | 1 450 |
| 30 | 1 150 | 1 350 | 30 | 1 250 | 1 550 | 30 | 1 350 | 1 450 |
| 32 | 900 | 1 100 | 32 | 1 000 | 1 300 | 32 | 1 050 | 1 400 |
| 34 | 700 | 900 | 34 | 800 | 1 050 | 34 | 800 | 1 200 |
| 36 | 500 | 700 | 36 | 550 | 850 | 36 | | 950 |
| 38 | | 550 | 38 | | 650 | 38 | | 750 |
| 40 | | | 40 | | 500 | 40 | | 550 |

This information is not for crane operation. Operator must refer to the in-cab information for crane operation. Rated lifting capacities shown on fully extended outriggers do not exceed 75% of the tipping loads and on tires do not exceed 65% of the tipping loads.

6.8t Counterweight – Fully Extended Outriggers – 360° Rotation
(All Capacities Are Listed In Kilograms)

| 33.53m Main Boom Length 2° Fly Offset | | | 33.53m Main Boom Length 20° Fly Offset | | | 33.53m Main Boom Length 40° Fly Offset | | |
|--|----------------|-------|---|----------------|-------|---|----------------|-------|
| Radius (m) | Fly Length (m) | | Radius (m) | Fly Length (m) | | Radius (m) | Fly Length (m) | |
| | 8.69 | 15.54 | | 8.69 | 15.54 | | 8.69 | 15.54 |
| 12 | 4 300 | | 12 | | | 12 | | |
| 14 | 4 300 | 2 800 | 14 | 4 300 | | 14 | | |
| 16 | 4 300 | 2 800 | 16 | 4 050 | | 16 | 3 400 | |
| 18 | 3 950 | 2 800 | 18 | 3 650 | 2 250 | 18 | 3 300 | |
| 20 | 3 600 | 2 750 | 20 | 3 350 | 2 100 | 20 | 3 150 | |
| 22 | 3 050 | 2 550 | 22 | 3 050 | 2 000 | 22 | 2 900 | 1 600 |
| 24 | 2 500 | 2 300 | 24 | 2 700 | 1 900 | 24 | 2 700 | 1 550 |
| 26 | 2 100 | 2 100 | 26 | 2 250 | 1 800 | 26 | 2 400 | 1 500 |
| 28 | 1 750 | 1 950 | 28 | 1 900 | 1 750 | 28 | 2 000 | 1 450 |
| 30 | 1 450 | 1 650 | 30 | 1 550 | 1 650 | 30 | 1 650 | 1 450 |
| 32 | 1 200 | 1 350 | 32 | 1 300 | 1 550 | 32 | 1 350 | 1 400 |
| 34 | 950 | 1 150 | 34 | 1 050 | 1 300 | 34 | 1 050 | 1 400 |
| 36 | 750 | 950 | 36 | 800 | 1 100 | 36 | | 1 200 |
| 38 | 600 | 750 | 38 | 600 | 900 | 38 | | 1 000 |
| 40 | 450 | 600 | 40 | | 700 | 40 | | 750 |
| 42 | | | 42 | | 550 | 42 | | 550 |

This information is not for crane operation. Operator must refer to the in-cab information for crane operation. Rated lifting capacities shown on fully extended outriggers do not exceed 75% of the tipping loads and on tires do not exceed 65% of the tipping loads.

This page intentionally left blank

This page intentionally left blank

This page intentionally left blank

Link-Belt Construction Equipment Company Lexington, Kentucky www.linkbelt.com

®Link-Belt is a registered trademark. Copyright 2015. We are constantly improving our products and therefore reserve the right to change designs and specifications.