



TEREX RT 300 SERIES

Rough Terrain Cranes



FEATURES

- **30-35 tons (27-32 mt)**
maximum lifting capacity
- **94 ft. (28.6 m)**
maximum boom length
- **147 ft. (44.8 m)**
maximum tip height
- Four-section full power, mechanically synchronized boom with single lever control
- Swingaway jib offsettable 0°, 15° or 30°
- Two-speed main and auxiliary winches
- Quick-reeving boom head and hook block
- Fully independent multi-position out and down outriggers
- Environmental operator's cab optimizes load visibility and productivity
- RCI 510 load system Rated Capacity Indicator
- Easy access for routine servicing of the engine, transmission, batteries, etc. provided by hinged lockable access doors.
- Easy to read load chart books include range diagrams
- 12-month or 2000 hours warranty, major weldments are 5-years or 10,000 hours

simple, available and
cost effective™

Machines shown may have optional equipment.

TEREX RT 300 SERIES

Rough Terrain Cranes

RT 330 – 30 tons (27 mt)

RT 335 – 35 tons (32 mt)



94 ft. (28.6 m) FOUR-SECTION, FULL-POWER, MECHANICALLY SYNCHRONIZED BOOM WITH SINGLE LEVER CONTROL

- High strength, four plate construction welded inside and out with embossed side plate holes to reduce weight and increase strength.
- Single boom hoist cylinder provides boom elevation of -5° to 76° for easier reeving changes and close radius operation.
- Quick-reeving boom head; no need to remove wedge from socket.
- 360° house lock standard

ENVIRONMENTAL OPERATOR'S CAB

- Rated Capacity Indicator (RCI) system including anti-two block system with automatic function disconnects.
- Deluxe six-way adjustable operator's seat has torsion bar suspension and adjustable head and arm rests.
- Sound and weather insulated for comfort.
- Removable front window, hinged tinted glass skylight, and sliding right-hand window.
- Dash-mounted controls for swing, boom telescope, boom hoist, and single lever two-speed main winch; pedals for swing brake and boom hoist. Foot accelerator with hand throttle.
- Complete instrumentation. Environmentally-sealed rocker switches. Circuit breakers in cab.

RUGGED, EASY-TO-MANEUVER CARRIER

- Box-type chassis construction with reinforcing cross members.
- Full power-shift transmission with integral torque converter; neutral start; 6 speeds forward 3 reverse.
- Hydraulic four-wheel power steering for 2-wheel, 4-wheel or crab steer.
- Full air brakes with air dryer.
- Fully independent hydraulic outriggers may be utilized fully extended to 22 ft. (6.71 m), in their 1/2 extended position, or fully retracted.
- Tail swing only 9 ft. (2.74 m).
- Standard Cummins 6BT5.9 diesel engine.
- Easy access for routine servicing of the engine, transmission, batteries, etc. is provided by hinged lockable access doors without the need to unbolt access panels.
- Engine compartment access doors (4), and operators cab are all keyed alike.
- All outside compartments and fluid reservoir access doors/caps have lockable latches or are equipped with padlock hasps.
- Standard 23.5R25 tires.
- Tachometer and rear axle centering light standard.

POWERFUL, TWO-SPEED WINCHES

- 533 fpm (162.5 m/min) maximum line speed, 15,639 lbs. (7093 kg) maximum line pull. Single lever control.
- Integral automatic brake.
- Electronic drum indicators.
- Grooved drum, tapered flanges, and spring loaded cable roller for improved spooling.

HIGH CAPACITY, DEPENDABLE HYDRAULIC SYSTEM

- Three gear pumps driven off the transmission. Combined system capability is 119 gpm (450 lpm).
- Hydraulic reservoir with 114 gal. (432 l) capacity and full flow oil filtration system.

OPTIONS INCLUDE:

- 32 ft. or 32 to 49 ft. (9.75 or 9.75 to 14.93 m) swing-on jib. Both offset 0° , 15° or 30° .
- Auxiliary winch with rope.
- Heater/defroster, air conditioner.
- Cold weather starting aid.
- 21:00 x 25, 28 P.R. tires.
- CAT 3116 DITA diesel engine.

For more information, product demonstration, or details on purchase, lease and rental plans, please contact your local Terex Cranes Distributor.

We reserve the right to amend these specifications at any time without notice. The only warranty applicable is our standard written warranty applicable to the particular product and sale. We make no other warranty, expressed or implied.

 **TEREX CRANES**

106 12th Street S.E.
Waverly, IA 50677-9466 USA
(319) 352-3920 • FAX: (319) 352-5727
E-mail: waverly@terexlifting.com

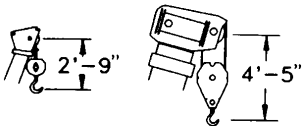
www.terexlift.com



TEREX RT 335

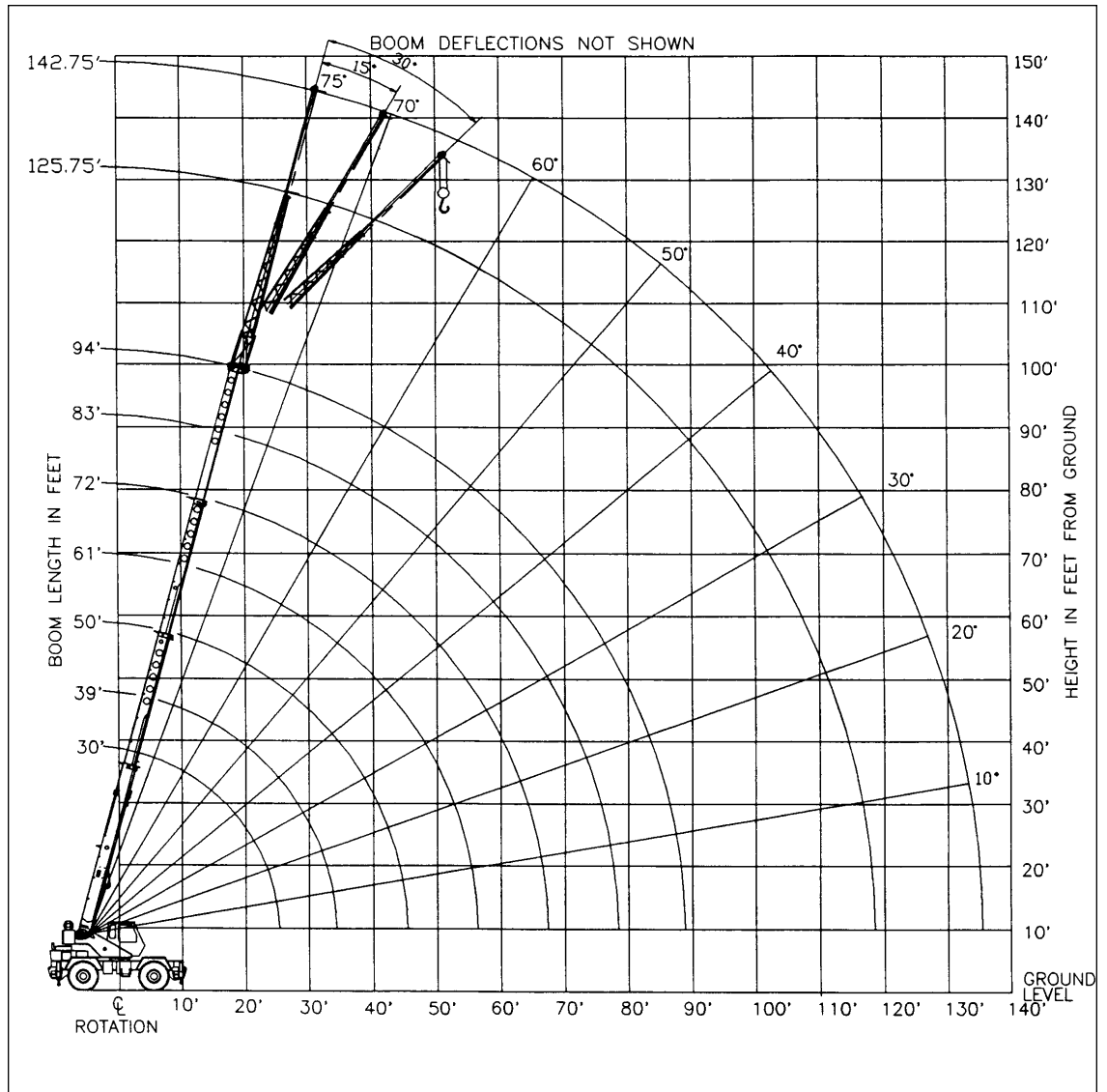
rough terrain crane
35 ton capacity

range diagram & lifting capacities

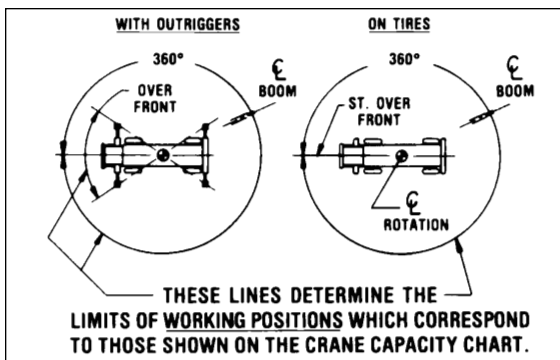


DIMENSIONS ARE FOR LARGEST
FACTORY FURNISHED HOOK
BLOCK AND HEADACHE BALL,
WITH ANTI-BLOCK ACTIVATED

Range Diagram (30' - 94' boom)



CRANE WORKING CONDITIONS



REDUCTION IN MAIN BOOM CAPACITY

All Jibs in Stowed Position _____ 0 Lbs.
Aux. Boom in Head Sheave _____ 100 Lbs.

HOOK BLOCK WEIGHTS

Hook & Ball _____ 239 Lbs.
Hook Block (3 Sheave) _____ 670 Lbs.
Hook Block (4 Sheave) _____ 690 Lbs.

Lifting Capacities – Pounds (30’ – 94’ boom)

MODEL RT 335

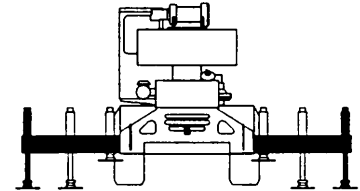
COUNTERWEIGHT:
W/AUX. WINCH 8900 LBS.
W/O AUX. WINCH 10,000 LBS.
BOOM LENGTH 30-94 FT.
OUTRIGGER SPREAD 22 FT.

STABILITY PERCENTAGE
ON OUTRIGGERS 85%
ON TIRES 75%
PCSA CLASS 10-156

CAUTION: Do not use this specification sheet as a load rating chart. The format of data is not consistent with the machine chart and may be subject to change.

ON OUTRIGGERS – FULLY EXTENDED

| LOAD RADIUS (FT) | BOOM LENGTH 30 FT | | | BOOM LENGTH 39 FT | | | BOOM LENGTH 50 FT | | | LOAD RADIUS (FT) |
|------------------|-------------------------|-----------------|-----------|-------------------------|-----------------|-----------|-------------------------|-----------------|-----------|------------------|
| | LOADED BOOM ANGLE (DEG) | OVER FRONT (LB) | 360° (LB) | LOADED BOOM ANGLE (DEG) | OVER FRONT (LB) | 360° (LB) | LOADED BOOM ANGLE (DEG) | OVER FRONT (LB) | 360° (LB) | |
| 10 | 63.0 | 70,000* | 70,000* | 69.4 | 46,600* | 46,600* | | | | 10 |
| 12 | 58.5 | 60,800* | 60,800* | 66.2 | 46,600* | 46,600* | 71.7 | 46,600* | 46,600* | 12 |
| 15 | 51.4 | 50,600* | 50,600* | 61.2 | 46,600* | 46,600* | 68.0 | 44,300* | 44,300* | 15 |
| 20 | 37.4 | 36,100* | 36,100* | 52.3 | 36,900* | 36,900* | 61.6 | 37,500* | 37,500* | 20 |
| 25 | 13.7 | 27,300* | 27,300* | 42.0 | 28,200* | 28,200* | 54.8 | 28,800* | 28,800* | 25 |
| 30 | ** | | | 28.8 | 22,300* | 22,300* | 47.3 | 22,900* | 22,900* | 30 |
| 35 | | | | ** | | | 38.7 | 18,800* | 18,800* | 35 |
| 40 | | | | | | | 27.9 | 15,600* | 15,600* | 40 |
| 45 | | | | | | | 7.9 | 13,100* | 13,100* | 45 |
| 50 | | | | | | | ** | | | 50 |
| 55 | | | | | | | | | | 55 |
| 60 | | | | | | | | | | 60 |
| 65 | | | | | | | | | | 65 |
| 70 | | | | | | | | | | 70 |
| 75 | | | | | | | | | | 75 |
| 80 | | | | | | | | | | 80 |
| 85 | | | | | | | | | | 85 |
| 90 | | | | | | | | | | 90 |



USE THESE CHARTS ONLY WHEN ALL OUTRIGGERS ARE FULLY EXTENDED

| LOAD RADIUS (FT) | BOOM LENGTH 61 FT | | | BOOM LENGTH 72 FT | | | BOOM LENGTH 83 FT | | | BOOM LENGTH 94 FT | | | LOAD RADIUS (FT) |
|------------------|-------------------------|-----------------|-----------|-------------------------|-----------------|-----------|-------------------------|-----------------|-----------|-------------------------|-----------------|-----------|------------------|
| | LOADED BOOM ANGLE (DEG) | OVER FRONT (LB) | 360° (LB) | LOADED BOOM ANGLE (DEG) | OVER FRONT (LB) | 360° (LB) | LOADED BOOM ANGLE (DEG) | OVER FRONT (LB) | 360° (LB) | LOADED BOOM ANGLE (DEG) | OVER FRONT (LB) | 360° (LB) | |
| 10 | | | | | | | | | | | | | 10 |
| 12 | | | | | | | | | | | | | 12 |
| 15 | 72.1 | 38,100* | 38,100* | | | | | | | | | | 15 |
| 20 | 67.1 | 33,000* | 33,000* | 70.8 | 27,400* | 27,400* | | | | | | | 20 |
| 25 | 61.9 | 27,900* | 27,900* | 66.5 | 23,100* | 23,100* | 69.8 | 21,800* | 21,800* | 72.2 | 17,500* | 17,500* | 25 |
| 30 | 56.3 | 23,300* | 23,300* | 62.0 | 19,900* | 19,900* | 66.0 | 18,300* | 18,300* | 69.0 | 15,000* | 15,000* | 30 |
| 35 | 50.4 | 19,100* | 19,100* | 57.4 | 17,400* | 17,400* | 62.2 | 15,900* | 15,900* | 65.7 | 13,100* | 13,100* | 35 |
| 40 | 43.9 | 16,000* | 16,000* | 52.5 | 15,400* | 15,400* | 58.1 | 13,800* | 13,800* | 62.2 | 11,500* | 11,500* | 40 |
| 45 | 36.5 | 13,500* | 13,500* | 47.2 | 13,800* | 13,800* | 53.9 | 12,100* | 12,100* | 58.7 | 10,100* | 10,100* | 45 |
| 50 | 27.3 | 11,500* | 11,500* | 41.4 | 11,800* | 11,800* | 49.5 | 10,900* | 10,900* | 55.1 | 9,000* | 9,000* | 50 |
| 55 | 13.0 | 9,900* | 9,900* | 34.8 | 10,200* | 10,200* | 44.7 | 9,700* | 9,700* | 51.2 | 8,200* | 8,200* | 55 |
| 60 | ** | | | 26.9 | 8,800* | 8,800* | 39.5 | 8,800* | 8,800* | 47.2 | 7,300* | 7,300* | 60 |
| 65 | | | | 15.5 | 7,700* | 7,700* | 33.6 | 7,900* | 7,800* | 42.8 | 6,600* | 6,600* | 65 |
| 70 | | | | ** | | | 26.6 | 6,900* | 6,800* | 38.0 | 6,000* | 6,000* | 70 |
| 75 | | | | | | | 17.0 | 5,900* | 5,800* | 32.7 | 5,500* | 5,500* | 75 |
| 80 | | | | | | | ** | | | 26.4 | 5,000* | 5,000* | 80 |
| 85 | | | | | | | | | | 18.1 | 4,600* | 4,500* | 85 |
| 90 | | | | | | | | | | ** | | | 90 |

** MAXIMUM CAPACITY AT 0 DEGREE BOOM ANGLE

| BOOM LENGTH 30 FT | | | BOOM LENGTH 39 FT | | | BOOM LENGTH 50 FT | | | BOOM LENGTH 61 FT | | | BOOM LENGTH 72 FT | | | BOOM LENGTH 83 FT | | | BOOM LENGTH 94 FT | | |
|-------------------|-----------------|-----------|-------------------|-----------------|-----------|-------------------|-----------------|-----------|-------------------|-----------------|-----------|-------------------|-----------------|-----------|-------------------|-----------------|-----------|-------------------|-----------------|-----------|
| LOAD RADIUS (FT) | OVER FRONT (LB) | 360° (LB) | LOAD RADIUS (FT) | OVER FRONT (LB) | 360° (LB) | LOAD RADIUS (FT) | OVER FRONT (LB) | 360° (LB) | LOAD RADIUS (FT) | OVER FRONT (LB) | 360° (LB) | LOAD RADIUS (FT) | OVER FRONT (LB) | 360° (LB) | LOAD RADIUS (FT) | OVER FRONT (LB) | 360° (LB) | LOAD RADIUS (FT) | OVER FRONT (LB) | 360° (LB) |
| 25.6 | 26,300* | 26,300* | 34.3 | 18,500* | 18,500* | 45.3 | 12,900* | 12,900* | 56.3 | 9,500* | 9,500* | 67.3 | 7,200* | 7,100 | 78.3 | 5,300 | 5,200 | 89.3 | 4,000 | 3,900 |

Lifting Capacities – Pounds (30' – 94' boom)

MODEL RT 335

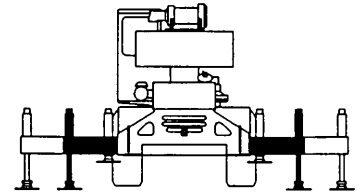
COUNTERWEIGHT:
W/AUX. WINCH 8900 LBS.
W/O AUX. WINCH 10,000 LBS.
BOOM LENGTH 30-94 FT.
OUTRIGGER SPREAD 22 FT.

STABILITY PERCENTAGE
ON OUTRIGGERS 85%
ON TIRES 75%
PCSA CLASS 10-156

CAUTION: Do not use this specification sheet as a load rating chart. The format of data is not consistent with the machine chart and may be subject to change.

ON OUTRIGGERS – MID POSITION

| LOAD RADIUS (FT) | BOOM LENGTH 30 FT | | BOOM LENGTH 39 FT | | BOOM LENGTH 50 FT | | LOAD RADIUS (FT) |
|------------------|-------------------------|-----------|-------------------------|-----------|-------------------------|-----------|------------------|
| | LOADED BOOM ANGLE (DEG) | 360° (LB) | LOADED BOOM ANGLE (DEG) | 360° (LB) | LOADED BOOM ANGLE (DEG) | 360° (LB) | |
| 10 | 63.0 | 70,000* | 69.4 | 46,600* | | | 10 |
| 12 | 58.5 | 60,800* | 66.2 | 46,600* | 71.7 | 46,600* | 12 |
| 15 | 51.4 | 50,600* | 61.2 | 46,600* | 68.0 | 44,300* | 15 |
| 20 | 37.4 | 33,000 | 52.3 | 33,800 | 61.6 | 34,300 | 20 |
| 25 | 13.7 | 21,200 | 42.0 | 22,400 | 54.8 | 22,800 | 25 |
| 30 | ** | | 28.8 | 15,900 | 47.3 | 16,500 | 30 |
| 35 | | | ** | | 38.7 | 12,500 | 35 |
| 40 | | | | | 27.9 | 9,600 | 40 |
| 45 | | | | | 7.9 | 7,400 | 45 |
| 50 | | | | | ** | | 50 |
| 55 | | | | | | | 55 |
| 60 | | | | | | | 60 |
| 65 | | | | | | | 65 |
| 70 | | | | | | | 70 |
| 75 | | | | | | | 75 |
| 80 | | | | | | | 80 |
| 85 | | | | | | | 85 |
| 90 | | | | | | | 90 |



USE THESE CHARTS ONLY WHEN ALL OUTRIGGERS ARE PINNED IN MID POSITION

| LOAD RADIUS (FT) | BOOM LENGTH 61 FT | | BOOM LENGTH 72 FT | | BOOM LENGTH 83 FT | | BOOM LENGTH 94 FT | | LOAD RADIUS (FT) |
|------------------|-------------------------|-----------|-------------------------|-----------|-------------------------|-----------|-------------------------|-----------|------------------|
| | LOADED BOOM ANGLE (DEG) | 360° (LB) | LOADED BOOM ANGLE (DEG) | 360° (LB) | LOADED BOOM ANGLE (DEG) | 360° (LB) | LOADED BOOM ANGLE (DEG) | 360° (LB) | |
| 10 | | | | | | | | | 10 |
| 12 | | | | | | | | | 12 |
| 15 | 72.1 | 38,100* | | | | | | | 15 |
| 20 | 67.1 | 33,000* | 70.8 | 27,400* | | | | | 20 |
| 25 | 61.9 | 23,100 | 66.5 | 23,100* | 69.8 | 21,800* | 72.2 | 17,500* | 25 |
| 30 | 56.3 | 16,800 | 62.0 | 17,000 | 66.0 | 17,100 | 69.0 | 15,000* | 30 |
| 35 | 50.4 | 12,800 | 57.4 | 12,900 | 62.2 | 13,100 | 65.7 | 13,100* | 35 |
| 40 | 43.9 | 10,000 | 52.5 | 10,200 | 58.1 | 10,300 | 62.2 | 10,400 | 40 |
| 45 | 36.5 | 7,900 | 47.2 | 8,100 | 53.9 | 8,300 | 58.7 | 8,300 | 45 |
| 50 | 27.3 | 6,300 | 41.4 | 6,600 | 49.5 | 6,700 | 55.1 | 6,800 | 50 |
| 55 | 13.0 | 5,000 | 34.8 | 5,300 | 44.7 | 5,500 | 51.2 | 5,600 | 55 |
| 60 | ** | | 26.9 | 4,300 | 39.5 | 4,500 | 47.2 | 4,600 | 60 |
| 65 | | | 15.5 | 3,400 | 33.6 | 3,600 | 42.8 | 3,700 | 65 |
| 70 | | | ** | | 26.6 | 2,900 | 38.0 | 3,000 | 70 |
| 75 | | | | | 17.0 | 2,300 | 32.7 | 2,400 | 75 |
| 80 | | | | | ** | | 26.4 | 1,900 | 80 |
| 85 | | | | | | | 18.1 | 1,400 | 85 |
| 90 | | | | | | | ** | | 90 |

** MAXIMUM CAPACITY AT 0 DEGREE BOOM ANGLE

| BOOM LENGTH 30 FT | | BOOM LENGTH 39 FT | | BOOM LENGTH 50 FT | | BOOM LENGTH 61 FT | | BOOM LENGTH 72 FT | | BOOM LENGTH 83 FT | | BOOM LENGTH 94 FT | |
|-------------------|-----------|-------------------|-----------|-------------------|-----------|-------------------|-----------|-------------------|-----------|-------------------|-----------|-------------------|-----------|
| LOAD RADIUS (FT) | 360° (LB) | LOAD RADIUS (FT) | 360° (LB) | LOAD RADIUS (FT) | 360° (LB) | LOAD RADIUS (FT) | 360° (LB) | LOAD RADIUS (FT) | 360° (LB) | LOAD RADIUS (FT) | 360° (LB) | LOAD RADIUS (FT) | 360° (LB) |
| 25.6 | 20,100 | 34.3 | 12,100 | 45.3 | 7,300 | 56.3 | 4,700 | 67.3 | 3,000 | 78.3 | 1,900 | 89.3 | 1,000 |

Lifting Capacities – Pounds (30' – 94' boom)

MODEL RT 335

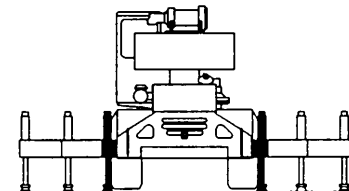
COUNTERWEIGHT:
W/AUX. WINCH 8900 LBS.
W/O AUX. WINCH 10,000 LBS.
BOOM LENGTH 30-94 FT.
OUTRIGGER SPREAD 22 FT.

STABILITY PERCENTAGE
ON OUTRIGGERS 85%
ON TIRES 75%
PCSA CLASS 10-156

CAUTION: Do not use this specification sheet as a load rating chart. The format of data is not consistent with the machine chart and may be subject to change.

ON OUTRIGGERS – RETRACTED

| LOAD RADIUS (FT) | BOOM LENGTH 30 FT | | BOOM LENGTH 39 FT | | BOOM LENGTH 50 FT | | LOAD RADIUS (FT) |
|------------------|-------------------------|-----------|-------------------------|-----------|-------------------------|-----------|------------------|
| | LOADED BOOM ANGLE (DEG) | 360° (LB) | LOADED BOOM ANGLE (DEG) | 360° (LB) | LOADED BOOM ANGLE (DEG) | 360° (LB) | |
| 10 | 63.0 | 51,000 | 69.4 | 46,600* | | | 10 |
| 12 | 58.5 | 35,800 | 66.2 | 36,500 | 71.7 | 37,100 | 12 |
| 15 | 51.4 | 23,800 | 61.2 | 24,500 | 68.0 | 25,000 | 15 |
| 20 | 37.4 | 14,000 | 52.3 | 14,800 | 61.6 | 15,300 | 20 |
| 25 | 13.7 | 8,800 | 42.0 | 9,800 | 54.8 | 10,400 | 25 |
| 30 | ** | | 28.8 | 6,700 | 47.3 | 7,300 | 30 |
| 35 | | | ** | | 38.7 | 5,200 | 35 |
| 40 | | | | | 27.9 | 3,700 | 40 |
| 45 | | | | | 7.9 | 2,400 | 45 |
| 50 | | | | | ** | | 50 |
| 55 | | | | | | | 55 |
| 60 | | | | | | | 60 |



**USE THESE CHARTS
WHEN ALL OUTRIGGER
BEAMS ARE NOT IN
EITHER THE MID OR
FULLY EXTENDED
POSITION**

| LOAD RADIUS (FT) | BOOM LENGTH 61 FT | | BOOM LENGTH 72 FT | | BOOM LENGTH 83 FT | | BOOM LENGTH 94 FT | | LOAD RADIUS (FT) |
|------------------|-------------------------|-----------|-------------------------|-----------|-------------------------|-----------|-------------------------|-----------|------------------|
| | LOADED BOOM ANGLE (DEG) | 360° (LB) | LOADED BOOM ANGLE (DEG) | 360° (LB) | LOADED BOOM ANGLE (DEG) | 360° (LB) | LOADED BOOM ANGLE (DEG) | 360° (LB) | |
| 10 | | | | | | | | | 10 |
| 12 | | | | | | | | | 12 |
| 15 | 72.1 | 25,300 | | | | | | | 15 |
| 20 | 67.1 | 15,600 | 70.8 | 15,800 | | | | | 20 |
| 25 | 61.9 | 10,600 | 66.5 | 10,800 | 69.8 | 10,900 | 72.2 | 11,000 | 25 |
| 30 | 56.3 | 7,600 | 62.0 | 7,800 | 66.0 | 7,900 | 69.0 | 8,000 | 30 |
| 35 | 50.4 | 5,500 | 57.4 | 5,700 | 62.2 | 5,800 | 65.7 | 5,900 | 35 |
| 40 | 43.9 | 4,000 | 52.5 | 4,200 | 58.1 | 4,400 | 62.2 | 4,500 | 40 |
| 45 | 36.5 | 2,900 | 47.2 | 3,100 | 53.9 | 3,300 | 58.7 | 3,400 | 45 |
| 50 | 27.3 | 2,000 | 41.4 | 2,200 | 49.5 | 2,400 | 55.1 | 2,500 | 50 |
| 55 | 13.0 | 1,200 | 34.8 | 1,500 | 44.7 | 1,700 | 51.2 | 1,800 | 55 |
| 60 | ** | | 26.9 | 900 | 39.5 | 1,100 | 47.2 | 1,200 | 60 |

** MAXIMUM CAPACITY AT 0 DEGREE BOOM ANGLE

| BOOM LENGTH 30 FT | | BOOM LENGTH 39 FT | | BOOM LENGTH 50 FT | | BOOM LENGTH 61 FT | | BOOM LENGTH 72 FT | | BOOM LENGTH 83 FT | | BOOM LENGTH 94 FT | |
|-------------------|-----------|-------------------|-----------|-------------------|-----------|-------------------|-----------|-------------------|-----------|-------------------|-----------|-------------------|-----------|
| LOAD RADIUS (FT) | 360° (LB) | LOAD RADIUS (FT) | 360° (LB) | LOAD RADIUS (FT) | 360° (LB) | LOAD RADIUS (FT) | 360° (LB) | LOAD RADIUS (FT) | 360° (LB) | LOAD RADIUS (FT) | 360° (LB) | LOAD RADIUS (FT) | 360° (LB) |
| 25.6 | 8,200 | 34.3 | 4,700 | 45.3 | 2,300 | 56.3 | 1,000 | | | | | | |

Lifting Capacities – Pounds (30' – 94' boom)

MODEL RT 335

COUNTERWEIGHT:
W/AUX. WINCH 8900 LBS.
W/O AUX. WINCH 10,000 LBS.
BOOM LENGTH 30-94 FT.
OUTRIGGER SPREAD 22 FT.

STABILITY PERCENTAGE
ON OUTRIGGERS 85%
ON TIRES 75%
PCSA CLASS 10-156

CAUTION: Do not use this specification sheet as a load rating chart. The format of data is not consistent with the machine chart and may be subject to change.

ON TIRES

| RADIUS (FT) | MAX BOOM LENGTH (FT) | 23.5R25 | | | | 21.00 X 25-28PR | | | | RADIUS (FT) |
|----------------|-------------------------------|------------|---------------|--------------|---------|-----------------|---------|--------------|---------|----------------|
| | | STATIONARY | | PICK & CARRY | | STATIONARY | | PICK & CARRY | | |
| | | | | CREEP | 2.5 MPH | | | CREEP | 2.5 MPH | |
| | | 360° | STRAIGHT OVER | FRONT | 360° | STRAIGHT OVER | FRONT | | | |
| 10 | 30 | 30,900 | 63,700* | 46,700* | 39,000* | 30,500 | 73,700* | 56,000* | 47,400* | 10 |
| 12 | 30 | 24,900 | 55,500 | 40,600* | 33,800* | 25,400 | 64,500* | 48,900* | 41,200* | 12 |
| 15 | 39 | 19,100 | 43,100 | 33,600* | 27,800* | 18,900 | 46,800 | 40,700* | 34,100* | 15 |
| 20 | 39 | 12,400 | 24,600 | 24,600 | 20,900* | 11,600 | 24,900 | 24,900 | 24,900 | 20 |
| 25 | 50 | 8,400 | 16,400 | 16,400 | 16,100 | 7,600 | 16,500 | 16,500 | 16,500 | 25 |
| 30 | 50 | 5,600 | 12,500 | 12,500 | 12,500 | 5,200 | 12,600 | 12,600 | 12,600 | 30 |
| 35 | 50 | 4,300 | 9,600 | 9,600 | 9,600 | 3,900 | 9,600 | 9,600 | 9,600 | 35 |
| 40 | 61 | 3,000 | 7,500 | 7,500 | 7,500 | 2,800 | 7,600 | 7,600 | 7,600 | 40 |
| 45 | 61 | 2,300 | 6,100 | 6,100 | 6,100 | 2,100 | 6,200 | 6,200 | 6,200 | 45 |
| 50 | 61 | 1,600 | 5,000 | 5,000 | 5,000 | 1,400 | 5,200 | 5,200 | 5,200 | 50 |
| 55 | 61 | | 4,300 | 4,300 | 4,300 | | 4,300 | 4,300 | 4,300 | 55 |
| 60 | 72 | | 3,500 | 3,500 | 3,500 | | 3,600 | 3,600 | 3,600 | 60 |
| 65 | 72 | | 2,800 | 2,800 | 2,800 | | 2,800 | 2,800 | 2,800 | 65 |
| 70 | 83 | | 2,200 | 2,200 | 2,200 | | 2,200 | 2,200 | 2,200 | 70 |
| 75 | 83 | | 1,800 | 1,800 | 1,800 | | 1,900 | 1,900 | 1,900 | 75 |
| 80 | 94 | | 1,500 | 1,500 | 1,500 | | 1,500 | 1,500 | 1,500 | 80 |

NOTES FOR ON TIRE CAPACITIES

- A. For Pick and Carry operations, boom must be centered over the front of the crane with swing brake and lock engaged. Use minimum boom point height and keep load close to ground surface.
- B. The load should be restrained from swinging. **NO ON TIRE OPERATION WITH JIB ERECTED.**
- C. Without outriggers, never maneuver the boom beyond listed load radii for applicable tires to ensure stability.
- D. Creep speed is crane movement of less than 200 Ft. (61m) in a 30 minute period and not exceeding 1.0 mph (1.6 km/h).
- E. Refer to General Notes for additional information.

SIDE STOW JIB ON FULLY EXTENDED OUTRIGGERS

| LOADED BOOM ANGLE (DEG) | 32 FT OFFSETTABLE JIB | | | | | | 49 FT OFFSETTABLE JIB | | | | | | LOADED BOOM ANGLE (DEG) |
|----------------------------------|---------------------------------|--------------|---------------------------------|--------------|---------------------------------|--------------|---------------------------------|--------------|---------------------------------|--------------|---------------------------------|--------------|----------------------------------|
| | 0° OFFSET | | 15° OFFSET | | 30° OFFSET | | 0° OFFSET | | 15° OFFSET | | 30° OFFSET | | |
| | LOAD RADIUS (REF) (FT) | 360° (LB) | LOAD RADIUS (REF) (FT) | 360° (LB) | LOAD RADIUS (REF) (FT) | 360° (LB) | LOAD RADIUS (REF) (FT) | 360° (LB) | LOAD RADIUS (REF) (FT) | 360° (LB) | LOAD RADIUS (REF) (FT) | 360° (LB) | |
| 75 | 38 | 9,100* | 46 | 7,700* | 52 | 5,900* | 41 | 5,100* | 55 | 3,400* | 62 | 2,700* | 75 |
| 73 | 42 | 8,600* | 49 | 7,300* | 55 | 5,800* | 47 | 4,800* | 59 | 3,300* | 68 | 2,700* | 73 |
| 71 | 45 | 8,200* | 52 | 7,000* | 58 | 5,600* | 52 | 4,500* | 64 | 3,200* | 73 | 2,600* | 71 |
| 68 | 50 | 7,800* | 58 | 6,200* | 63 | 5,100* | 60 | 4,100* | 70 | 3,000* | 79 | 2,500* | 68 |
| 65 | 56 | 6,700* | 63 | 5,500* | 68 | 4,600* | 66 | 3,800* | 76 | 2,900* | 84 | 2,500* | 65 |
| 62 | 61 | 5,900* | 68 | 4,900* | 73 | 4,200* | 71 | 3,600* | 81 | 2,800* | 88 | 2,400* | 62 |
| 59 | 66 | 5,200* | 73 | 4,400* | 77 | 3,800* | 77 | 3,400* | 86 | 2,700* | 93 | 2,400* | 59 |
| 55 | 73 | 4,400* | 79 | 3,900* | 83 | 3,400* | 84 | 3,100* | 93 | 2,600* | 99 | 2,300* | 55 |
| 51 | 79 | 3,800* | 85 | 3,400* | 88 | 3,100* | 91 | 2,900* | 99 | 2,500* | 105 | 2,300* | 51 |
| 47 | 86 | 3,300* | 91 | 3,000* | 94 | 2,800* | 100 | 2,800* | 106 | 2,400* | 110 | 2,200* | 47 |
| 43 | 92 | 2,900* | 97 | 2,700* | 99 | 2,500* | 109 | 2,400* | 112 | 2,200* | 116 | 2,000* | 43 |
| 38 | 100 | 2,400* | 103 | 2,300* | 105 | 2,200* | 116 | 2,100* | 119 | 1,900* | 122 | 1,800* | 38 |
| 32 | 106 | 2,100* | 109 | 2,000* | 110 | 1,900* | 122 | 1,800* | 126 | 1,600* | 127 | 1,500* | 32 |
| 25 | 113 | 1,700* | 114 | 1,700* | | | 129 | 1,500* | 131 | 1,400* | | | 25 |
| 17 | 118 | 1,500* | 118 | 1,500* | | | 133 | 1,300* | 135 | 1,200* | | | 17 |
| 0 | 121 | 1200* | | | | | 138 | 1,000* | | | | | 0 |

NOTES FOR JIB CAPACITIES

- A. For all boom lengths less than the maximum with a jib erected, the rated loads are determined by boom angle only in the appropriate column.
- B. For boom angle not shown, use the capacity of the next lower boom angle.
- C. Listed radii are for extended main boom only.

MAX. PERMISSIBLE HOIST LOAD

| LINE PARTS | 1 | 2 | 3 | 4 | 5 | 6 | 7 | 8 |
|------------|-------|--------|--------|--------|--------|---------|---------|-----------|
| MAX. LOAD | 9,080 | 18,160 | 27,240 | 36,320 | 45,400 | 54,480 | 65,560 | 72,640 |
| BOOM HEAD | 2 | 3-D | 2-3 | 1-4-D | 2-3-4 | 2-3-4-D | 1-2-3-4 | 1-2-3-4-D |
| HOOK BLOCK | D | 3 | 3-D | 1-4 | 2-3-D | 2-3-4 | 2-3-4-D | 1-2-3-4 |

WIRE ROPE: 5/8" ROTATION RESISTANT COMPACTED STRAND, 18X19
OR 19X19 MINIMUM BREAKING STRENGTH - 22.7 TONS
5/8" 6X19 OR 6X37 IWPC IPS PREFORMED RIGHT
REGULAR LAY MINIMUM BREAKING STRENGTH - 17.9 TONS

RECOMMENDED TIRE PRESSURE

| TIRE SIZE | STATIONARY | CREEP | 2 1/2 MPH | TRAVEL |
|------------------|------------|--------|-----------|--------|
| 23.5R25-** | 94 PSI | 94 PSI | 94 PSI | 76 PSI |
| 21.00 X 25-28 PR | 85 PSI | 85 PSI | 85 PSI | 65 PSI |

GENERAL NOTES

GENERAL

1. Rated loads as shown on Lift Charts pertain to this machine as originally manufactured and equipped. Modifications to the machine or use of optional equipment other than that specified can result in a reduction of capacity.
2. Construction equipment can be hazardous if improperly operated or maintained. Operation and maintenance of this machine shall be in compliance with the information in the Operator's, Parts and Safety Manuals supplied with this machine. If these manuals are missing, order replacements from the manufacturer through your distributor.
3. These warnings do not constitute all of the operating conditions for the crane. The operator and job site supervision must read the OPERATORS MANUAL, CIMA SAFETY MANUAL, APPLICABLE OSHA REGULATIONS, AND SOCIETY OF MECHANICAL ENGINEERS (ASME) SAFETY STANDARDS FOR CRANES.
4. This crane and its load ratings are in accordance with POWER CRANE & SHOVEL ASSOCIATION, STANDARD NO. 4, SAE CRANE LOAD STABILITY TEST CODE J765A, SAE METHOD OF TEST FOR CRANE STRUCTURE J1063 AND APPLICABLE SAFETY CODE FOR CRANES, DERRICKS AND HOISTS, ASME/ANSI B30.5.

DEFINITIONS

1. **LOAD RADIUS** – The horizontal distance from the axis of rotation before loading to the center of the vertical hoist line or tackle with a load applied.
2. **LOADED BOOM ANGLE** – It is the angle between the boom base section and the horizontal, after lifting the rated load at the rated radius. The boom angle before loading should be greater to account for deflections. The loaded boom angle combined with boom length give only an approximation of the operating radius.
3. **WORKING AREA** – Areas measured in a circular arc about the centerline of rotation as shown in the diagram.
4. **FREELY SUSPENDED LOAD** – Load hanging free with no direct external force applied except by the hoist rope.
5. **SIDE LOAD** – Horizontal force applied to the lifted load either on the ground or in the air.
6. **NO LOAD STABILITY LIMIT** – The stability limit radius shown on the range diagrams is the radius beyond which it is not permitted to position the boom, when the boom angle is less than the minimum shown on the applicable load chart, because the machine can overturn without any load.
7. **BOOM SIDE OF CRANE** – The side of the crane over which the boom is positioned when in an OVER SIDE working position.

SET-UP

1. Crane load ratings are based on the crane being leveled and standing on a firm, uniform supporting surface.
2. Crane load ratings on outriggers are based on all outrigger beams being fully extended or in the case of partial extension ratings mechanically pinned in the appropriate position, and the tires free of the supporting surface.
3. Crane load ratings on tires depend on appropriate inflation pressure and the tire conditions. Caution must be exercised when increasing air pressures in tires. Consult Operator's Manual for precautions.
4. Use of jibs, lattice-type boom extensions, or fourth section pullouts extended is not permitted for pick and carry operations.
5. Consult appropriate section of the Operator's and Service Manual for more exact description of hoist line reeving.
6. The use of more parts of line than required by the load may result in having insufficient rope to allow the hook block to reach the ground.
7. Properly maintained wire rope is essential for safe crane operation. Consult Operator's Manual for proper maintenance and inspection requirements.
8. When spin-resistant wire rope is used, the allowable rope loading shall be the breaking strength divided by five (5), unless otherwise specified by the wire rope manufacturer.
9. Do not elevate the boom above 60° unless the boom is positioned in-line with the crane's chassis or the outriggers are extended. Failure to observe this warning may result in loss of stability.

WE RESERVE THE RIGHT TO AMEND THESE SPECIFICATIONS AT ANY TIME WITHOUT NOTICE. THE ONLY WARRANTY APPLICABLE IS OUR STANDARD WRITTEN WARRANTY APPLICABLE TO THE PARTICULAR PRODUCT AND SALE. WE MAKE NO OTHER WARRANTY, EXPRESSED OR IMPLIED.

OPERATION

1. **CRANE LOAD RATINGS MUST NOT BE EXCEEDED. DO NOT ATTEMPT TO TIP THE CRANE TO DETERMINE ALLOWABLE LOADS.**
2. When either radius or boom length, or both, are between listed values, the smaller of the two listed load ratings shall be used.
3. Do not operate at longer radii than those listed on the applicable load rating chart (cross hatched areas shown on range diagrams).
4. The boom angles shown on the Capacity Chart give an approximation of the operating radius for a specified boom length. The boom angle, before loading, should be greater to account for boom deflection. It may be necessary to retract the boom if maximum boom angle is insufficient to maintain rated radius.
5. Power telescoping boom sections must be extended equally.
6. Rated loads include the weight of hook block, slings, and auxiliary lifting devices. Their weights shall be subtracted from the listed rated load to obtain the net load that can be lifted.

When lifting over the jib the weight of any hook block, slings, and auxiliary lifting devices at the boom head must be added to the load.

When jibs are erected but unused add two (2) times the weight of any hook block, slings, and auxiliary lifting devices at the jib head to the load.

7. Rated loads do not exceed 85% on outriggers or 75% on tires, of the tipping load as determined by SAE Crane Stability Test Code J765a. Structural strength ratings in chart are indicated with an asterisk (*).
8. Rated loads are based on freely suspended loads. No attempt shall be made to drag a load horizontally on the ground in any direction.
9. The user shall operate at reduced ratings to allow for adverse job conditions, such as: Soft or uneven ground, out of level conditions, high winds, side loads, pendulum action, jerking or sudden stopping of loads, hazardous conditions, experience of personnel, two machine lifts, traveling with loads, electric wires, etc., (side pull on boom or jib is hazardous). Derating of the cranes lifting capacity is required when wind speed exceeds 20 MPH. The center of the lifted load must never be allowed to move more than 3" feet off the center line of the base boom section due to the effects of wind, inertia, or any combination of the two.

**Use 2 feet off the center line of the base boom for a two section boom, 3 feet for a three section boom, or 4 feet for a four section boom."

10. The maximum load which can be telescoped is not definable, because of variations in loadings and crane maintenance, but it is permissible to attempt retraction and extension if load ratings are not exceeded.
11. Load ratings are dependent upon the crane being maintained according to manufacturer's specifications.
12. It is recommended that load handling devices, including hooks, and hook blocks, be kept away from boom head at all times.
13. **FOR TRUCK CRANES ONLY:** 360° capacities apply only to machines equipped with a front outrigger jack and all five (5) outrigger jacks properly set. If the front (5th) outrigger jack is not properly set, the work area is restricted to the over side and over rear areas as shown on the Crane Working Positions diagram. Use the 360° load ratings in the overside work areas.
14. Do not lift with outrigger beams positioned between the fully extended and intermediate (pinned) positions.
15. Truck Cranes not equipped with equalizing (bogie) beams between the rear axles may not be used for lifting "on tires". Truck Cranes equipped with equalizing beams and rear air suspension should "dump" the air before lifting "on tires".

CLAMSHELL, MAGNET, AND CONCRETE BUCKET SERVICE

1. Maximum boom length for clamshell and magnet service is 50 feet.
2. Weight of clamshell or magnet, plus contents are not to exceed 6,000 pounds or 90% of rated lifting capacities, whichever is less. For concrete bucket operation, weight of bucket and load must not exceed 90% of rated lifting capacity.



106 12th Street S.E.
Waverly, IA 50677-9466 USA
(319) 352-3920 • FAX: (319) 352-5727
E-mail: inquire@terexwaverly.com

www.terexlift.com